

---

# Varadero



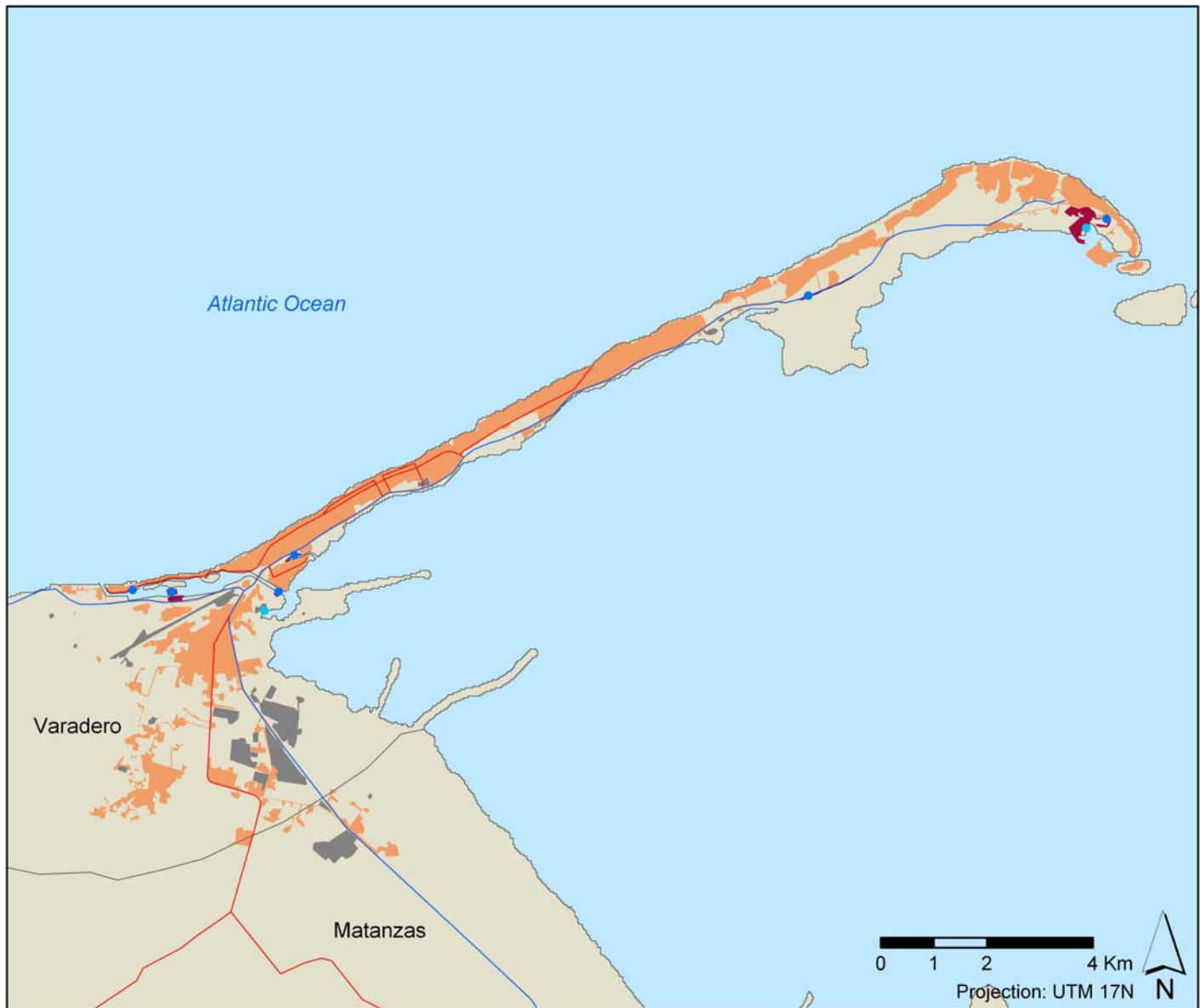
23°09'58,24" N 81°13'25,61" W



Image date: 2010

---

URBAN AREA



**Legend:**

- Residential area
- Industrial area
- Transport area
- Motorway
- Main road
- Harbour
- Marina
- Harbour and marina
- Main airport
- Secondary airport

Administrative Levels		Population (2010)	Capacity of potential second homes (2002) (nº of bed spaces)	Lodging capacity (2010) (nº of bed spaces)
Main tourist city ( <i>centro turístico</i> )	Varadero	27,630	179	34,502
Subregion ( <i>provincia</i> )	Matanzas	692,536	14,511	36,306
Region ( <i>isla</i> )	Cuba	11,241,161	237,167	115,555

Centro turístico	Surface (Km <sup>2</sup> )	Population (2010)	Housing units (2002)		Lodging capacity (2010) (n° of bed spaces)			
			Main homes	Capacity of potential second homes (n° of bed spaces)	Hotels	Camp Sites	Others	Total
Varadero	136.72	27,630	6,402	179	34,502	0	NDA	34,502

Built-up area		km <sup>2</sup>	%
TOTAL		14.01	100
Residential, tourist and commercial zone	Residential, tourist and commercial zone	11.85	84.55
Industrial zone, logistics and transport	Industrial Zone	1.85	13.17
	Harbour + Airport	0.32	2.28
	Total	2.17	15.45

Coastline urbanization (Km)		Maritime coastline	Continental coastline	Total
Built-up coastline	With beach	23.96	-	23.96
	Without beach	25.39	-	25.39
	Total	49.35	-	49.35
Not built-up coastline	With beach	1.35	-	1.35
	Without beach	15.00	-	15.00
	Total	16.35	-	16.35
Total coastline with beach (km)		25.31	-	25.31
Total coastline without beach (km)		40.39	-	40.39
TOTAL COASTLINE (km)		65.70	-	65.70

Land occupation to 500m of the coast		km <sup>2</sup>
Total land occupation to 500m of the coast		21.58
Land occupation by residential, tourist and commercial zone		7.75
Land occupation by Industrial zone, logistics and transport		0.44
Total of the built-up zone to 500m of the coast		8.19
Not built-up land		13.40

### **Spatial indices:**

<b>Land occupation indices</b>	<b>%</b>
Built-up beach index	36.47
Built-up coast index	75.11
Built-up coastal zone index	37.95
Industrial, logistics and transport coastal zone index	2.04

Compactness index	0.16
-------------------	------

### **Tourism indices:**

<b>Tourist function indices</b>	<b>%</b>
Lodging function rate [2010]	124.87
Second homes function rate [2010]	0.75
Tourist function rate [2010]	118.28

<b>Concentration indices</b>	
Tourism primacy index	**
Main tourist city regional weight index	95.03
Tourist area regional weight index	95.03

\*\* The calculation was not performed in destinations that include less than three municipalities within their limits

Urban attractiveness index	23.82
----------------------------	-------

### **Tourism spatial indices:**

Hotel density index	2,911.99
Lodging density index	2,927.10
Second home density index	15.11
Tourism density index	15.11

Beach hotel productivity index	1,439.99
Beach lodging productivity index	1,439.99
Beach second home productivity index	7.46
Beach tourism productivity index	1,447.46

Tourism spatial concentration index	*
-------------------------------------	---

\* This index has not been calculated for the destinations that have a single municipality