

---

# San Diego



32°52'49,44" N 117°12'38,46" W

---

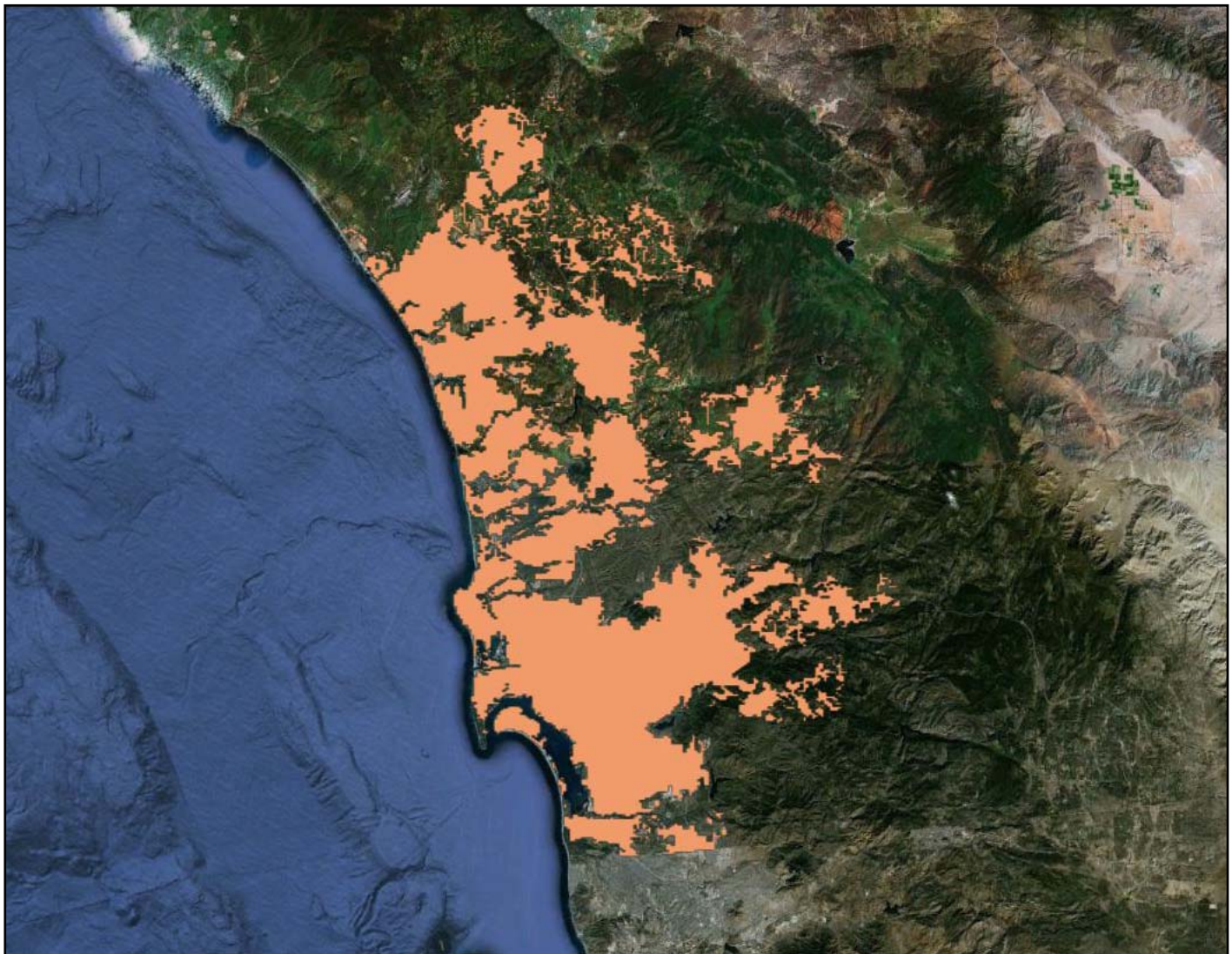
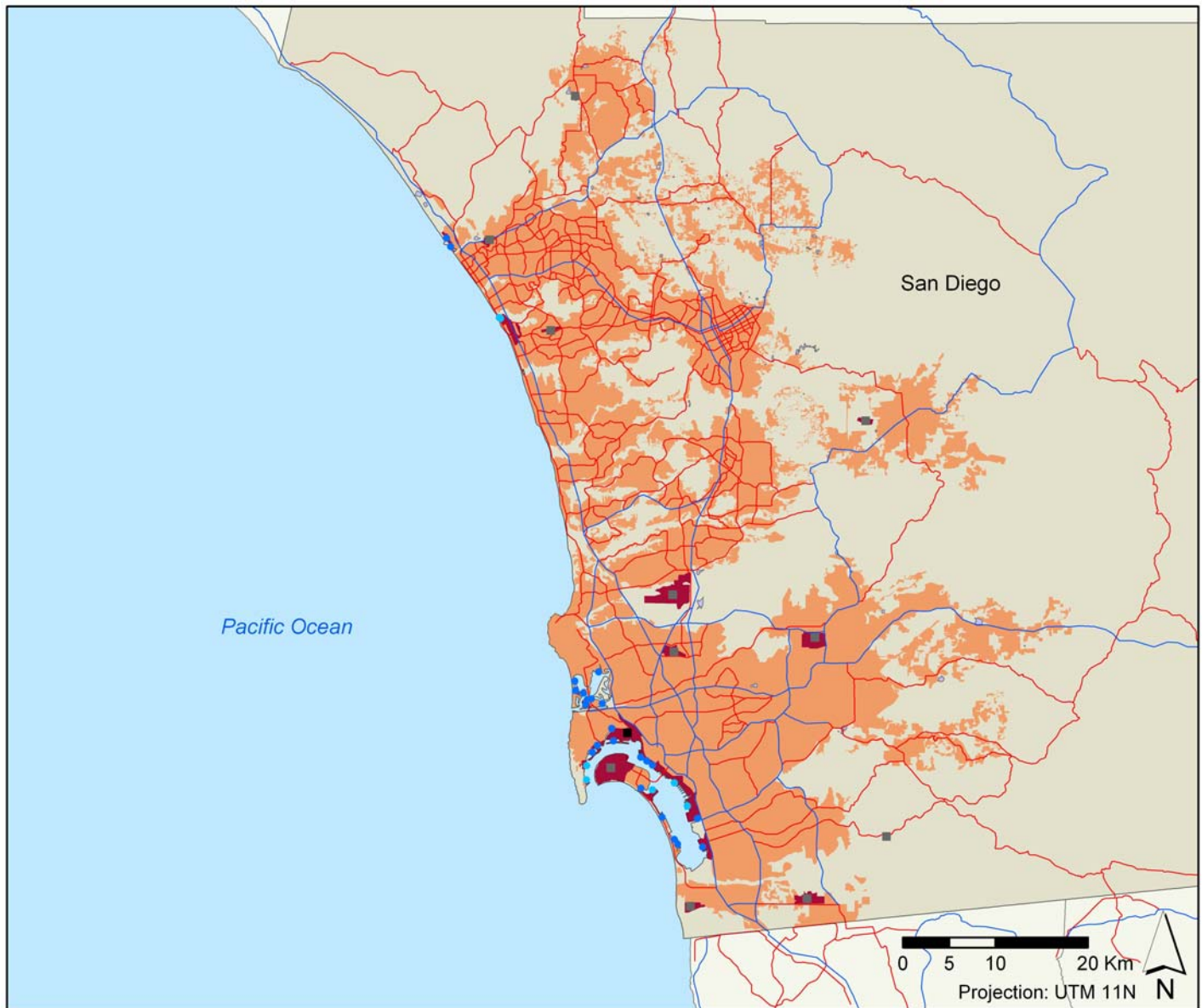


Image date: 2011

---

URBAN AREA



**Legend:**

- |  |   |  |   |
|--|---|--|---|
|  Residential area |  Motorway  |  Harbour            |  Main airport      |
|  Industrial area  |  Main road |  Marina             |  Secondary airport |
|  Transport area   |   |  Harbour and marina |   |

| Administrative Levels               |            | Population (2010) | Capacity of potential second homes (2010) (n° of bed spaces) | Lodging capacity (2010) (n° of bed spaces) |
|-------------------------------------|------------|-------------------|--|--|
| Main tourist city ( <i>county</i> ) | San Diego  | 3,095,313         | 272,724  | 130,289                                    |
| Region ( <i>state</i> )             | California | 37,253,956        | 3,859,041  | 1,112,949                                  |

| County    | Surface (Km <sup>2</sup> ) | Population (2010) | Housing units (2010) |   | Lodging capacity (2010)<br>(n° of bed spaces) |            |        |         |
|-----------|----------------------------|-------------------|----------------------|---|---|------------|--------|---------|
|           |                            |                   | Main homes           | Capacity of potential second homes (n° of bed spaces) | Hotels  | Camp Sites | Others | Total   |
| San Diego | 10,975.28                  | 3,095,313         | 1,086,865            | 272,724   | 110,156                                       | 20,133     | -      | 130,289 |

| Built-up area                            |  | km <sup>2</sup> | %     |
|--|--|-----------------|-------|
| TOTAL                                    |  | 1,849.67        | 100   |
| Residential, tourist and commercial zone | Residential, tourist and commercial zone | 1,789.67        | 96.76 |
| Industrial zone, logistics and transport | Industrial Zone                          | 6.15            | 0.33  |
|  | Harbour + Airport                        | 53.85           | 2.91  |
|  | Total                                    | 60.00           | 3.24  |

| Coastline urbanization (Km)        |               | Maritime coastline | Continental coastline | Total  |
|------------------------------------|---------------|--------------------|-----------------------|--------|
| Built-up coastline                 | With beach    | 84.51              | -                     | 84.51  |
|                                    | Without beach | 131.17             | -                     | 131.17 |
|                                    | Total         | 215.68             | -                     | 215.68 |
| Not built-up coastline             | With beach    | 31.71              | -                     | 31.71  |
|                                    | Without beach | 9.51               | -                     | 9.51   |
|                                    | Total         | 41.22              | -                     | 41.22  |
| Total coastline with beach (km)    |               | 116.22             | -                     | 116.22 |
| Total coastline without beach (km) |               | 140.68             | -                     | 140.68 |
| TOTAL COASTLINE (km)               |               | 256.90             | -                     | 256.90 |

| Land occupation to 500m of the coast                        | km <sup>2</sup> |
|---|-----------------|
| Total land occupation to 500m of the coast                  | 98.84           |
| Land occupation by residential, tourist and commercial zone | 38.72           |
| Land occupation by Industrial zone, logistics and transport | 19.92           |
| Total of the built-up zone to 500m of the coast             | 58.64           |
| Not built-up land   | 40.19           |

### **Spatial indices:**

| <b>Land occupation indices</b>                         | <b>%</b> |
|--|----------|
| Built-up beach index                                   | 32.90    |
| Built-up coast index                                   | 83.95    |
| Built-up coastal zone index                            | 59.33    |
| Industrial, logistics and transport coastal zone index | 20.16    |

|                   |      |
|-------------------|------|
| Compactness index | 0.66 |
|-------------------|------|

### **Tourism indices:**

| <b>Tourist function indices</b>          | <b>%</b> |
|--|----------|
| Lodging function rate <i>[2010]</i>      | 4.21     |
| Second homes function rate <i>[2010]</i> | 8.81     |
| Tourist function rate <i>[2010]</i>      | 13.02    |

| <b>Concentration indices</b>            |       |
|---|-------|
| Tourism primacy index                   | **    |
| Main tourist city regional weight index | 11.71 |
| Tourist area regional weight index      | 11.71 |

\*\* The calculation was not performed in destinations that include less than three municipalities within their limits

|                            |      |
|----------------------------|------|
| Urban attractiveness index | 1.41 |
|----------------------------|------|

### **Tourism spatial indices:**

|                           |        |
|---------------------------|--------|
| Hotel density index       | 61.55  |
| Lodging density index     | 225.19 |
| Second home density index | 152.39 |
| Tourism density index     | 152.39 |

|                                      |          |
|--------------------------------------|----------|
| Beach hotel productivity index       | 1,303.50 |
| Beach lodging productivity index     | 1,541.70 |
| Beach second home productivity index | 3,227.12 |
| Beach tourism productivity index     | 4,768.82 |

|                                     |   |
|-------------------------------------|---|
| Tourism spatial concentration index | * |
|-------------------------------------|---|

\* This index has not been calculated for the destinations that have a single municipality