
Salou / Costa Daurada Central

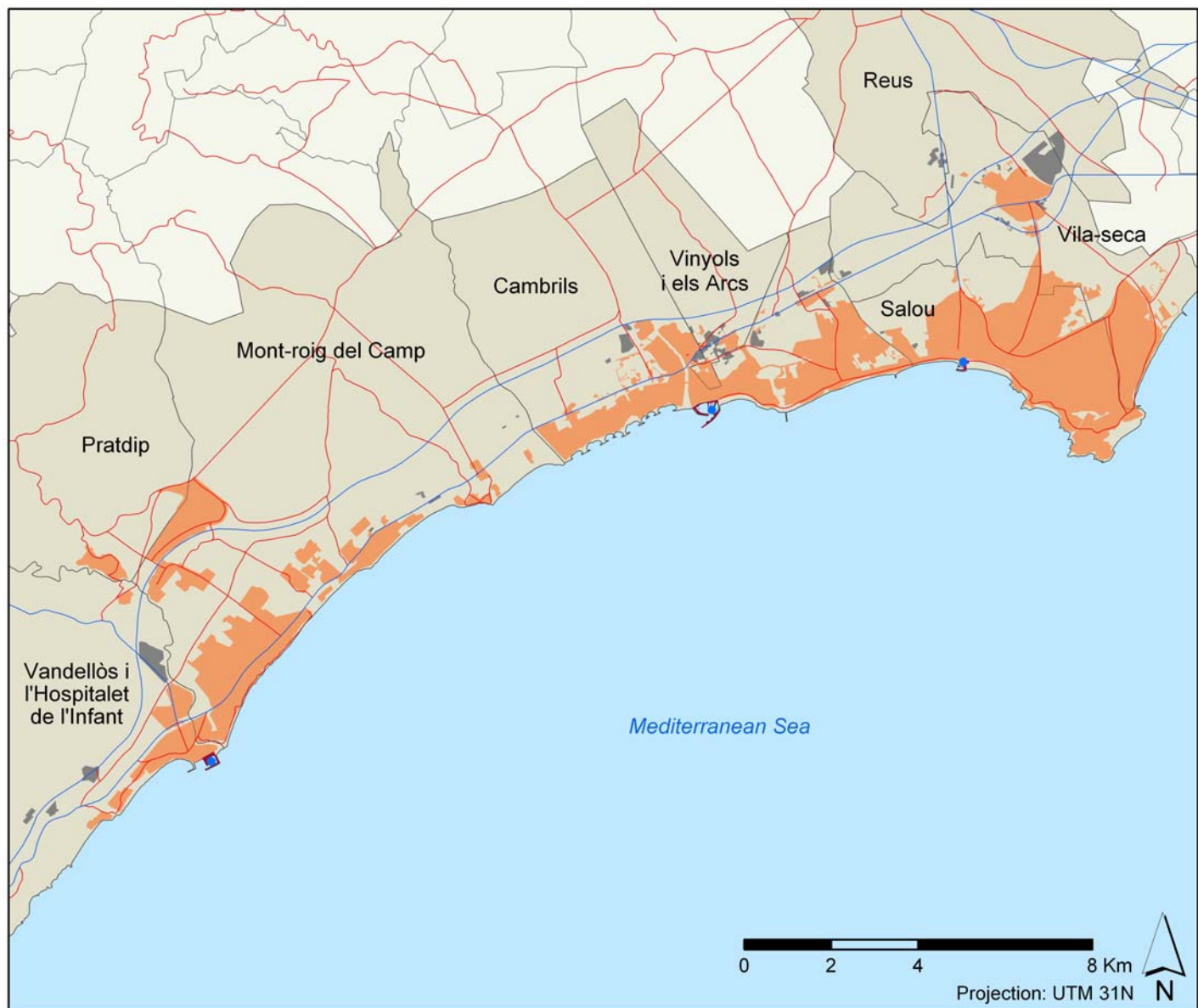


41°03'32,48" N 1°01'47,48" E



Image date: 2011

URBAN AREA



Legend:

Residential area	Motorway	Harbour	Main airport
Industrial area	Main road	Marina	Secondary airport
Transport area		Harbour and marina	

Administrative Levels		Population (2010)	Capacity of potential second homes (2001) (nº of bed spaces)	Lodging capacity (2010) (nº of bed spaces)
Main tourist city (<i>municipi</i>)	Salou	27,016	81,477	54,260
Salou/Costa Daurada Central Tourist Area		100,730	212,759	103,923
Subregion (<i>província</i>)	Tarragona	808,420	758,471	120,538
Region (<i>comunitat autònoma</i>)	Catalunya	7,512,381	3,494,047	487,553

Municipis	Surface (Km ²)	Population (2010)	Housing units (2001)		Lodging capacity (2010) (nº of bed spaces)			
			Main homes	Capacity of potential second homes (nº of bed spaces)	Hotels	Camp Sites	Others	Total
Cambrils	35.2	32,422	7,671	61,964	6,040	9,241	3,929	19,210
Mont-roig del Camp	63.3	12,193	2,629	28,049	332	11,648	1,659	13,639
Salou	15.1	27,016	5,601	81,477	30,038	5,451	18,771	54,260
Vandellòs i Hospitalet de l'Infant	102.7	5,839	1,478	7,473	326	1,793	335	2,454
Vila-seca	21.6	21,373	4,555	31,437	5,480	840	6,203	12,523
Vinyols i els Arcs	10.8	1,887	463	2,359	120	1,605	112	1,837

¹ Municipalities of Reus and Pratdip were not included in the statistical data table for methodological reasons explained in chapter nº of Methodological section.

Built-up area		km ²	%
TOTAL		35.43	100
Residential, tourist and commercial zone	Residential, tourist and commercial zone	33.24	93.82
Industrial zone, logistics and transport	Industrial Zone	2.07	5.84
	Harbour + Airport	0.12	0.34
	Total	2.20	6.21

Coastline urbanization (Km)		Maritime coastline	Continental coastline	Total
Built-up coastline	With beach	25.71	-	25.71
	Without beach	15.25	-	15.25
	Total	40.96	-	40.96
Not built-up coastline	With beach	4.71	-	4.71
	Without beach	1.72	-	1.72
	Total	6.43	-	6.43
Total coastline with beach (km)		30.42	-	30.42
Total coastline without beach (km)		16.96	-	16.96
TOTAL COASTLINE (km)		47.39	-	47.39

Land occupation to 500m of the coast		km ²
Total land occupation to 500m of the coast		20.29
Land occupation by residential, tourist and commercial zone		11.25
Land occupation by Industrial zone, logistics and transport		0.16
Total of the built-up zone to 500m of the coast		11.41
Not built-up land		8.88

Spatial indices:

Land occupation indices	%
Built-up beach index	54.26
Built-up coast index	86.45
Built-up coastal zone index	56.23
Industrial, logistics and transport coastal zone index	0.79

Compactness index	0.09
-------------------	------

Tourism indices:

Tourist function indices	%
Lodging function rate <i>[2010]</i>	103.17
Second homes function rate <i>[2010]</i>	262.32
Tourist function rate <i>[2010]</i>	365.49

Concentration indices	
Tourism primacy index	54.46
Main tourist city regional weight index	45.01
Tourist area regional weight index	86.22

Urban attractiveness index	13.47
----------------------------	-------

Tourism spatial indices:

Hotel density index	1,273.65
Lodging density index	9,527.14
Second home density index	6,400.69
Tourism density index	15,927.83

Beach hotel productivity index	1,646.67
Beach lodging productivity index	4,042.12
Beach second home productivity index	8,275.34
Beach tourism productivity index	12,317.46

Tourism spatial concentration index	1.81
-------------------------------------	------