
Rimini



44°04'18,96" N 12°33'37,23" E

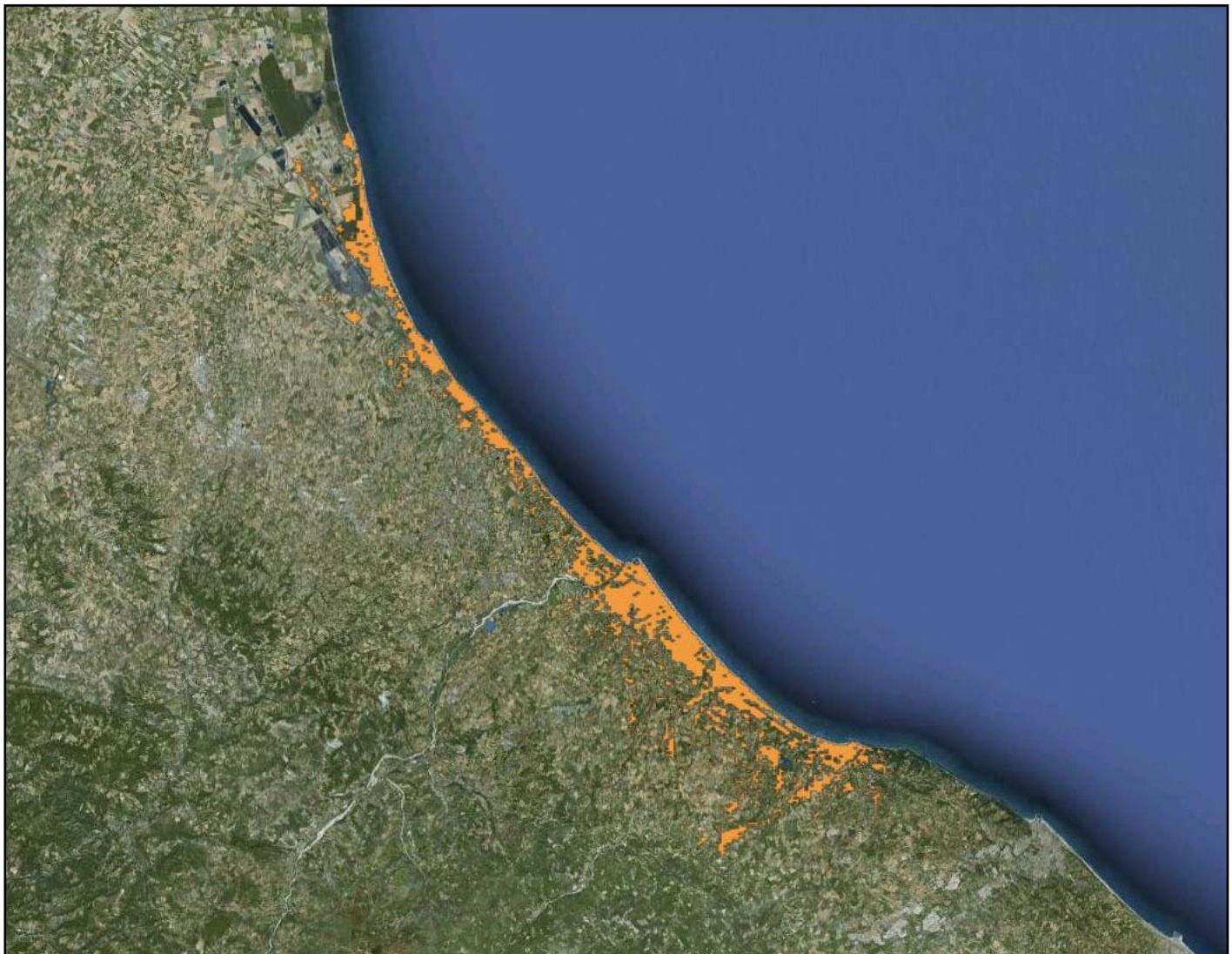
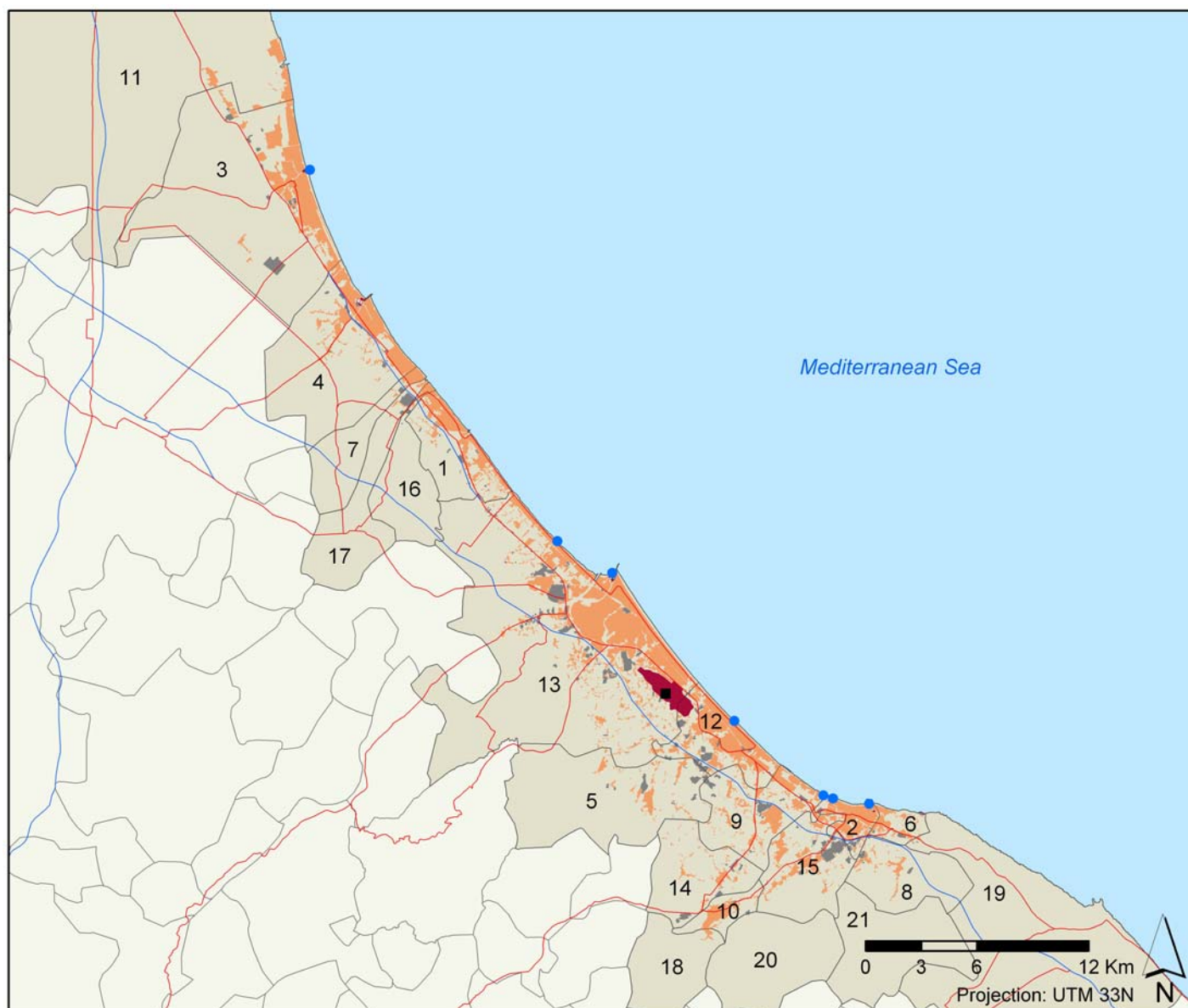


Image date: 2011

URBAN AREA



Legend:

- Residential area
- Industrial area
- Transport area
- Motorway
- Main road
- Harbour
- Marina
- Harbour and marina
- Main airport
- Secondary airport

| Administrative Levels | | Population (2010) | Capacity of potential second homes (2001) (n° of bed spaces) | Lodging capacity (2009) (n° of bed spaces) |
|-------------------------------------|-----------------|-------------------|---|---|
| Main tourist city (<i>comune</i>) | Rimini | 141,505 | 30,692 | 73,427 |
| Rimini Tourist Area | | 514,982 | 230,810 | 299,166 |
| Subregion (<i>provincia</i>) | Forlì-Cesena | 392,329 | 90,283 | 66,510 |
| | Ravenna | 389,509 | 132,668 | 77,456 |
| | Rimini | 325,219 | 91,560 | 164,575 |
| | Pesaro e Urbino | 365,788 | 118,104 | 36,960 |
| | Total | 1,472,845 | 432,614 | 345,501 |
| Regione | Emilia-Romagna | 4,395,569 | 1,167,583 | 434,163 |
| | Marche | 1,559,542 | 441,525 | 138,244 |
| | Total | 5,955,111 | 1,609,108 | 572,407 |

| N° | Comuni | Surface (Km ²) | Population (2010) | Housing units (2001) | | Lodging capacity (2009) (n° of bed spaces/places) | | | |
|----|------------------------|----------------------------|-------------------|----------------------|---|--|------------|--------|--------|
| | | | | Main homes | Capacity of potential second homes (n° of bed spaces) | Hotels | Camp Sites | Others | Total |
| | | | | | | | | | |
| 1 | Bellaria Igea Marina | 18.28 | 19,093 | 6,114 | 11,561 | 22,326 | 1,032 | 1,952 | 25,310 |
| 2 | Cattolica | 6.00 | 16,679 | 6,566 | 6,444 | 17,592 | 0 | 1,724 | 19,316 |
| 3 | Cervia | 82.19 | 28,861 | 10,964 | 34,223 | 26,378 | 4,593 | 5,347 | 36,318 |
| 4 | Cesenatico | 45.00 | 25,375 | 8,409 | 24,532 | 26,013 | 6,819 | 6,582 | 39,414 |
| 5 | Coriano | 46.00 | 9,971 | 2,981 | 858 | 35 | 0 | 41 | 76 |
| 6 | Gabicce Mare | 4.00 | 5,931 | 2,100 | 3,574 | 7,057 | 125 | 420 | 7,602 |
| 7 | Gatteo | 14.15 | 8,649 | 2,496 | 3,381 | 7,629 | 1,248 | 233 | 9,110 |
| 8 | Gradara | 17.52 | 4,636 | 1,245 | 676 | 32 | 50 | 47 | 129 |
| 9 | Misano Adriatico | 22.43 | 12,157 | 3,834 | 11,389 | 6,862 | 2,720 | 1,410 | 10,992 |
| 10 | Morciano Di Romagna | 5.00 | 6,910 | 2,312 | 924 | 32 | 0 | 0 | 32 |
| 11 | Ravenna | 652.83 | 157,459 | 56,734 | 77,039 | 9,652 | 21,226 | 6,511 | 37,389 |
| 12 | Riccione | 17.11 | 35,543 | 13,834 | 19,947 | 24,841 | 7,140 | 2,293 | 34,274 |
| 13 | Rimini | 134.20 | 141,505 | 51,030 | 30,692 | 65,911 | 2,970 | 4,546 | 73,427 |
| 14 | San Clemente | 20.00 | 5,002 | 1,138 | 266 | 42 | 0 | 8 | 50 |
| 15 | San Giovanni | 21.24 | 8,923 | 2,880 | 1,138 | 64 | 0 | 26 | 90 |
| 16 | San Mauro Pascoli | 17.35 | 10,959 | 3,330 | 2,307 | 2,783 | 322 | 171 | 3,276 |
| 17 | Savignano Sul Rubicone | 23.16 | 17,329 | 5,277 | 1,859 | 54 | 2,193 | 114 | 2,361 |

¹ Municipalities 18 (Montefiore Conca), 19 (Pesaro), 20 (Saludecio) and 21 (Tavullida) were not included in the statistical data table for methodological reasons explained in chapter n° of Methodological section.

| Built-up area | | km² | % |
|--|--|-----------------------|----------|
| TOTAL | | 93.80 | 100 |
| Residential, tourist and commercial zone | Residential, tourist and commercial zone | 74.62 | 79.56 |
| Industrial zone, logistics and transport | Industrial Zone | 15.78 | 16.82 |
| | Harbour + Airport | 3.39 | 3.61 |
| | Total | 19.17 | 20.44 |

| Coastline urbanization (Km) | | Maritime coastline | Continental coastline | Total |
|------------------------------------|---------------|---------------------------|------------------------------|--------------|
| Built-up coastline | With beach | 57.58 | - | 57.58 |
| | Without beach | 17.92 | - | 17.92 |
| | Total | 75.50 | - | 75.50 |
| Not built-up coastline | With beach | 0.0 | - | 0.0 |
| | Without beach | 0.0 | - | 0.0 |
| | Total | 0.0 | - | 0.0 |
| Total coastline with beach (km) | | 57.58 | - | 57.58 |
| Total coastline without beach (km) | | 17.92 | - | 17.92 |
| TOTAL COASTLINE (km) | | 75.50 | - | 75.50 |

| Land occupation to 500m of the coast | km² |
|---|-----------------------|
| Total land occupation to 500m of the coast | 26.36 |
| Land occupation by residential, tourist and commercial zone | 17.08 |
| Land occupation by Industrial zone, logistics and transport | 0.26 |
| Total of the built-up zone to 500m of the coast | 17.34 |
| Not built-up land | 9.02 |

Spatial indices:

| Land occupation indices | % |
|--|----------|
| Built-up beach index | 76.26 |
| Built-up coast index | 100 |
| Built-up coastal zone index | 65.78 |
| Industrial, logistics and transport coastal zone index | 0.99 |

| | |
|-------------------|------|
| Compactness index | 0.06 |
|-------------------|------|

Tourism indices:

| Tourist function indices | % |
|--|----------|
| Lodging function rate <i>[2009]</i> | 58.81 |
| Second homes function rate <i>[2001]</i> | 51.15 |
| Tourist function rate <i>[2001]</i> | 124.31 |

| Concentration indices | |
|---|-------|
| Tourism primacy index | 32.12 |
| Main tourist city regional weight index | 17.13 |
| Tourist area regional weight index | 81.74 |

| | |
|----------------------------|------|
| Urban attractiveness index | 1.77 |
|----------------------------|------|

Tourism spatial indices:

| | |
|---------------------------|----------|
| Hotel density index | 2,827.14 |
| Lodging density index | 4,459.97 |
| Second home density index | 35.74 |
| Tourism density index | 4,495.71 |

| | |
|--------------------------------------|----------|
| Beach hotel productivity index | 3,663.79 |
| Beach lodging productivity index | 5,733.52 |
| Beach second home productivity index | 46.32 |
| Beach tourism productivity index | 5,779.84 |

| | |
|-------------------------------------|------|
| Tourism spatial concentration index | 0.63 |
|-------------------------------------|------|