
Nice / Côte Azur

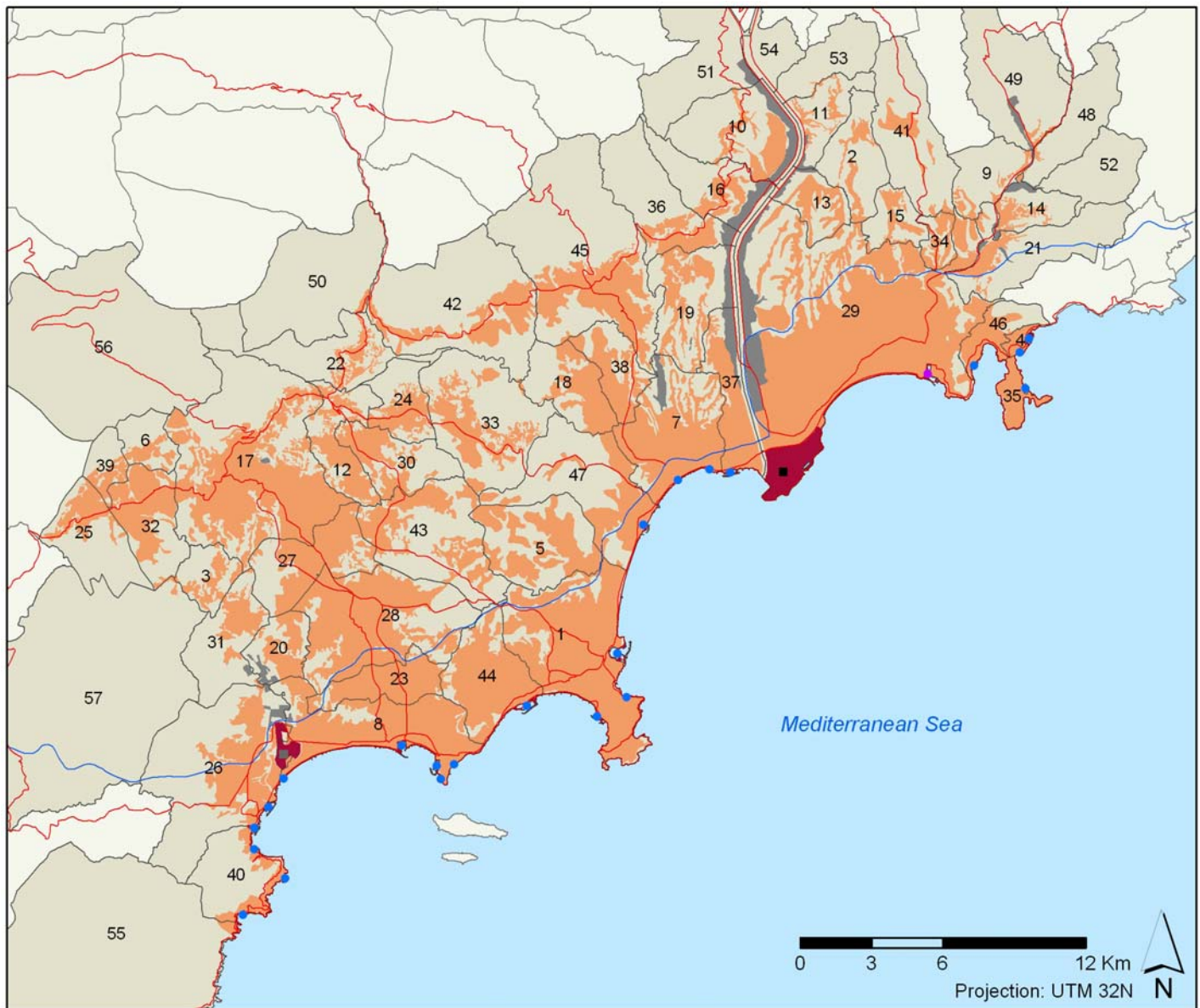


43°36'10,64" N 7°06'10,38"E



Image date: 2011

URBAN AREA



Legend:

Residential area	Motorway	Harbour	Main airport
Industrial area	Main road	Marina	Secondary airport
Transport area		Harbour and marina	

Administrative Levels		Population (2009)	Capacity of potential second homes (2007) (n° of bed spaces)	Lodging capacity (2009) (n° of bed spaces)
Main tourist city (<i>commune</i>)	Nice	344,460	181,557	25,167
Nice-Côte Azur Tourist Area		944,798	563,338	115,574
Subregion (<i>département</i>)	Alpes Maritimes	1,079,100	763,424	145,768
Region	Provence-Alpes-Côte Azur (PACA)	4,889,053	2,288,923	226,916

N°	Communes	Surface (Km ²)	Population (2009)	Housing units (2007)		Lodging capacity (2009) (n° of bed spaces/places)			
				Main homes	Capacity of potential second homes (n° of bed spaces)	Hotels	Camp Sites	Others	Total
1	Antibes	26.48	76,580	37,066	69,494	4,856	5,070	7,510	17,436
2	Aspremont	9.44	2,199	134	482	36	0	20	56
3	Auribeau-Sur-Siagné	5.48	3,001	1,038	1,069	38	375	12	425
4	Beaulieu-sur-Mer	0.95	3,770	1,864	5,005	616	0	97	713
5	Biot	15.54	9,353	3,637	3,339	310	660	675	1,645
6	Cabris	5.43	1,455	669	662	52	0	73	125
7	Cagnes-sur-Mer	17.95	48,605	23,114	21,276	438	1,350	723	2,511
8	Cannes	19.62	74,445	35,961	110,240	10,758	633	12,532	23,923
9	Cantaron	7.38	1,209	455	228	0	0	12	12
10	Carros	15.11	11,743	4,274	1,049	166	0	349	515
11	Castagniers	7.52	1,541	602	324	96	0	165	261
12	Châteauneuf Grasse	8.95	3,288	1,238	1,255	88	0	30	118
13	Colomars	6.72	3,291	1,217	375	86	0	10	96
14	Drap	5.54	4,500	1,568	308	0	0	17	17
15	Falicon	5.17	1,945	712	210	0	0	18	18
16	Gattières	10.03	4,119	1,550	541	16	0	37	53
17	Grasse	44.44	53,150	20,731	11,275	528	231	2,756	3,515
18	La Colle-sur-Loup	9.82	7,770	2,973	1,897	94	1,113	1,258	2,465
19	La Gaude	13.10	6,897	2,480	851	196	0	83	279
20	La-Roquette-sur-Siagne	6.31	5,018	1,823	550	40	450	47	537
21	La Trinité	14.90	10,556	3,989	803	0	0	6	6
22	Le-Bar-sur-Loup	14.47	2,853	1,084	947	24	210	20	254
23	Le Cannet	7.71	42,148	20,770	17,984	622	390	680	1,692
24	Le Rouret	7.10	3,986	1,435	1,094	32	0	19	51
25	Le Tignet	11.26	3,209	1,151	711	0	0	38	38
26	Mandelieu-la-Napoule	31.37	22,067	10,487	30,118	1,352	1,335	5,714	8,401
27	Mouans Sartoux	13.52	10,490	4,062	2,081	634	0	18	652
28	Mougins	25.64	19,929	8,310	7,313	726	120	1,006	1,852
29	Nice	71.92	344,460	166,081	181,557	20,502	42	4,623	25,167
30	Opio	9.47	2,184	807	838	82	330	888	1,300
31	Pégomas	11.28	6,675	2,436	931	126	420	75	621
32	Peymeinade	9.76	8,054	3,401	2,405	32	0	131	163
33	Roquefort-les-Pins	21.53	6,596	2,279	1,806	84	0	16	100
34	Saint-André-de-la-Roche	2.86	5,028	1,791	363	0	0	0	0
35	Saint-Jean-Cap-Ferrat	2.48	2,047	946	4,083	746	0	50	796
36	Saint Jeannet	14.58	3,738	1,388	1,080	62	273	93	428
37	Saint-Laurent-du-Var	10.11	30,157	13,890	8,941	830	237	696	1,763
38	Saint Paul	7.26	3,540	1,416	1,650	642	288	225	1,155
39	Spéracèdes	3.46	1,287	475	683	18	0	16	34
40	Théoule-sur-Mer	10.49	1,582	757	8,675	280	0	1,002	1,282
41	Tourrette Levens	16.50	4,470	1,645	802	12	0	7	19
42	Tourrettes-sur-Loup	29.28	4,207	1,751	2,370	114	420	196	730

N°	Communes	Surface (Km ²)	Population (2009)	Housing units (2007)		Lodging capacity (2009) (n° of bed spaces/places)			
				Main homes	Capacity of potential second homes (n° of bed spaces)	Hotels	Camp Sites	Others	Total
43	Valbonne	18.97	12,565	4,383	3,056	1,400	0	1,809	3,209
44	Vallauris	13.04	28,204	13,048	20,371	670	0	1,119	1,789
45	Vence	39.23	19,377	8,540	9,073	598	1,350	464	2,412
46	Villefranche-sur-Mer	4.88	5,888	3,150	6,798	700	0	633	1,333
47	Villeneuve Loubet	19.60	15,322	6,269	16,375	906	2,904	1,797	5,607

¹ Municipalities 48 (Blausasc), 49 (Contes), 50 (Gourdon), 51 (Le Broc), 52 (Peillon), 53 (Saint Blaise), 54 (Saint Raphaël), 55 (Saint-Martint-du-Var), 56 (Saint-Vallier-de-Thiery) and 57 (Tanneron) were not included in the statistical data table for methodological reasons explained in chapter n° of Methodological section.

Built-up area		km ²	%
TOTAL		336.07	100
Residential, tourist and commercial zone	Residential, tourist and commercial zone	316.42	94.15
Industrial zone, logistics and transport	Industrial Zone	13.82	4.11
	Harbour + Airport	5.83	1.74
	Total	19.65	5.85

Coastline urbanization (Km)		Maritime coastline	Continental coastline	Total
Built-up coastline	With beach	28.55	-	28.55
	Without beach	64.37	-	64.37
	Total	92.92	-	92.92
Not built-up coastline	With beach	0.48	-	0.48
	Without beach	0.92	-	0.92
	Total	1.41	-	1.41
Total coastline With beach (km)		29.03	-	29.03
Total coastline Without beach (km)		65.29	-	65.29
TOTAL COASTLINE (km)		94.33	-	94.33

Land occupation to 500m of the coast		km ²
Total land occupation to 500m of the coast		40.56
Land occupation by residential, tourist and commercial zone		29.98
Land occupation by Industrial zone, logistics and transport		3.33
Total of the built-up zone to 500m of the coast		29.98
Not built-up land		7.25

Spatial indices:

Land occupation indices	%
Built-up beach index	30.27
Built-up coast index	98.52
Built-up coastal zone index	82.13
Industrial, logistics and transport coastal zone index	8.21

Compactness index	0.23
-------------------	------

Tourism indices:

Tourist function indices	%
Lodging function rate <i>[2009]</i>	12.23
Second homes function rate <i>[2009]</i>	59.63
Tourist function rate <i>[2009]</i>	71.86

Concentration indices	
Tourism primacy index	33.59
Main tourist city regional weight index	17.27
Tourist area regional weight index	79.29

Urban attractiveness index	0.54
----------------------------	------

Tourism spatial indices:

Hotel density index	156.78
Lodging density index	2,145.60
Second home density index	1,780.34
Tourism density index	3,925.94

Beach hotel productivity index	1,737.58
Beach lodging productivity index	4,048.13
Beach second home productivity index	19,731.55
Beach tourism productivity index	23,779.68

Tourism spatial concentration index	1.27
-------------------------------------	------