
Miami



26°09'53,68" N 80°10'34,63" W

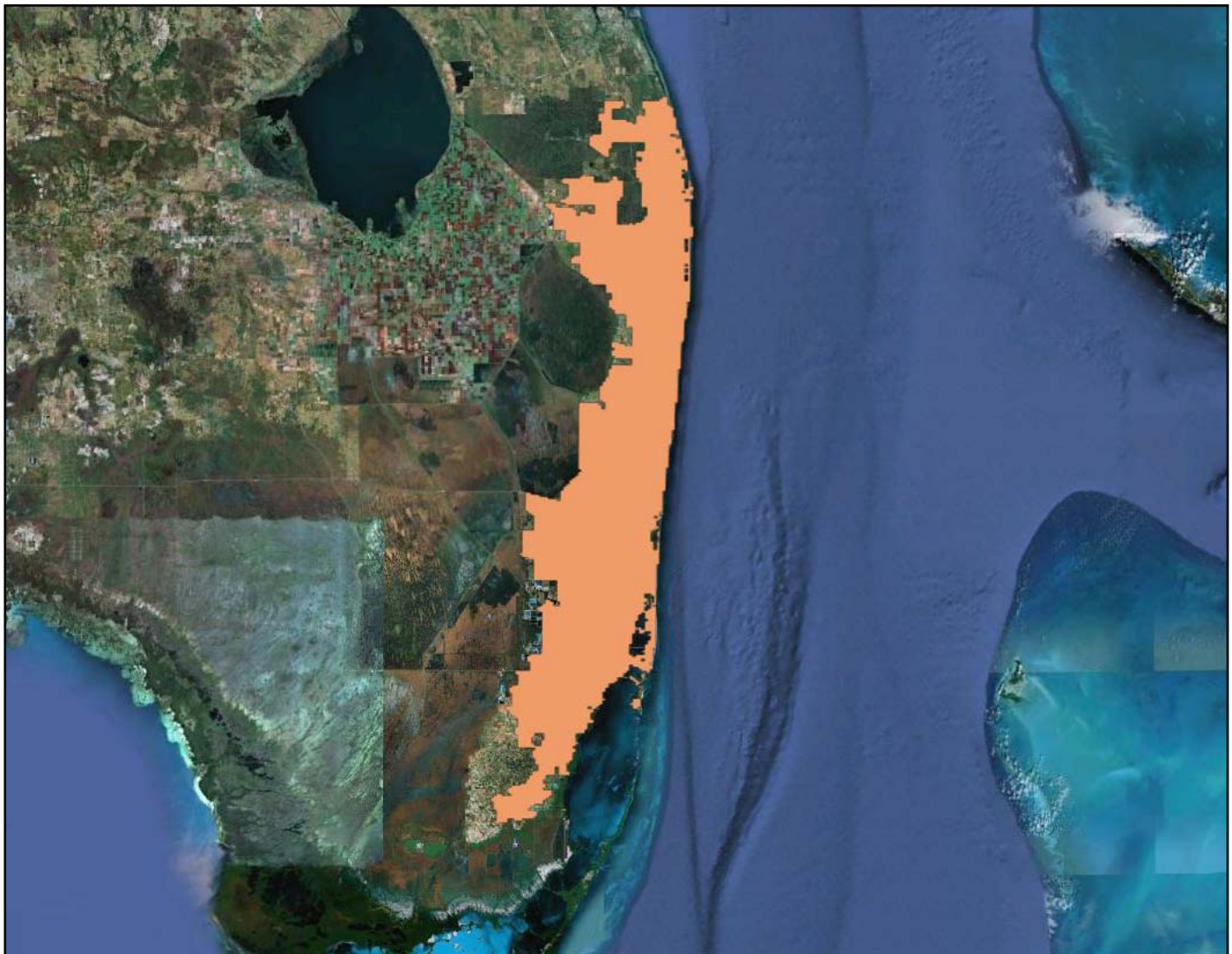
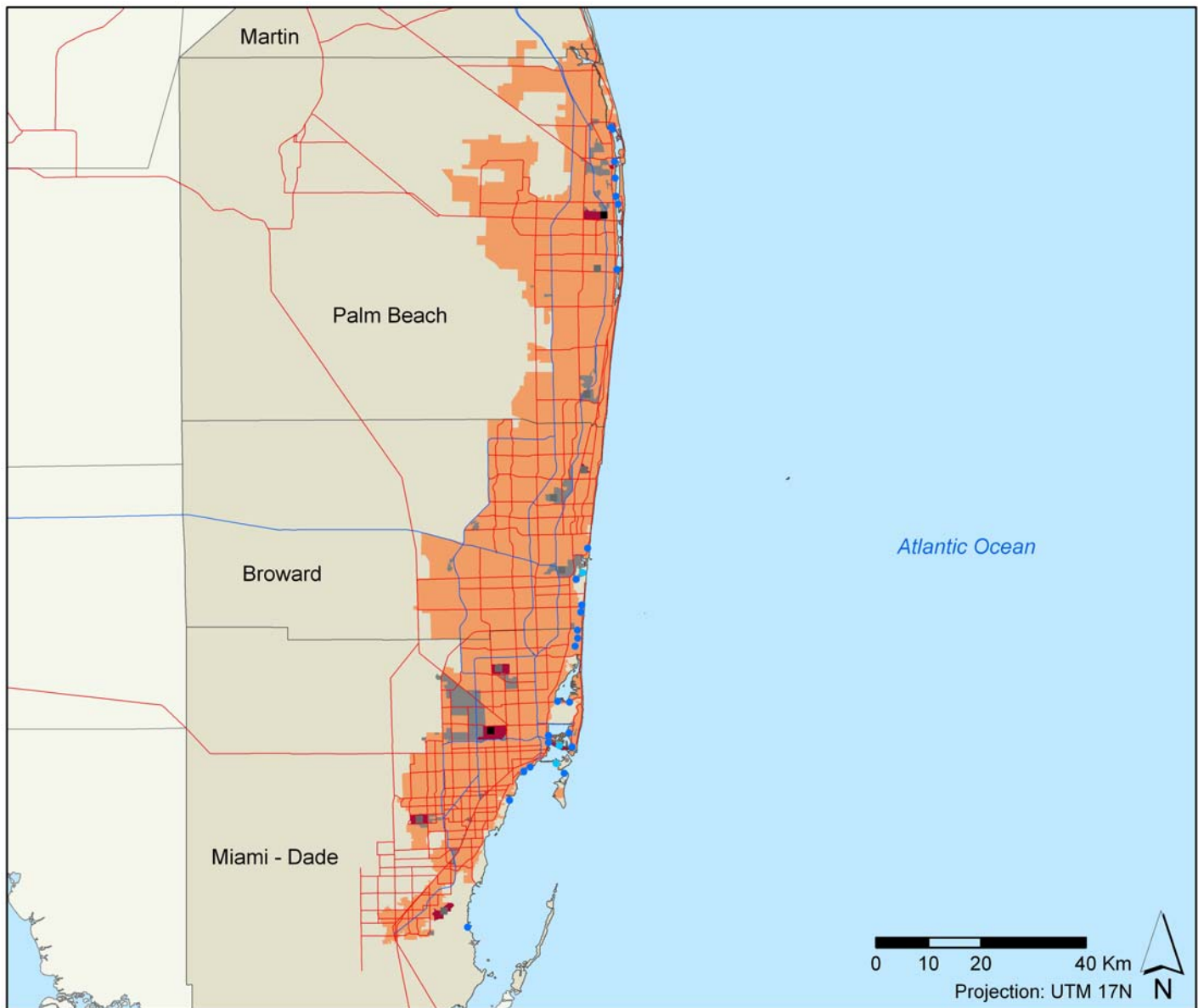


Image date: 2011

URBAN AREA



Legend:

- Residential area
- Industrial area
- Transport area
- Motorway
- Main road
- Harbour
- Marina
- Harbour and marina
- Main airport
- Secondary airport

Administrative Levels		Population (2010)	Capacity of potential second homes (2010) (n° of bed spaces)	Lodging capacity (2010) (n° of bed spaces)
Main tourist city (county)	Miami Dade	2,496,435	427,291	107,355
Miami Tourist Area		5,564,635	1,283,770	246,102
Region (state)	Florida	18,801,310	5,490,723	1,499,308

Counties	Surface (Km ²)	Population (2010)	Housing units (2010)		Lodging capacity (2010) (n° of bed spaces/places)			
			Main homes	Capacity of potential second homes (n° of bed spaces)	Hotels	Camp sites	Others	Total
Broward	3,418.00	1,748,066	686,047	435,194	43,915	7,154	36,661	87,730
Miami Dade	6,296.91	2,496,435	867,352	427,291	71,288	1,706	34,361	107,355
Palm Beach	6,181.00	1,320,134	544,227	421,285	23,269	6,111	21,637	51,017

¹ Martin county was not included in the statistical data table for methodological reasons explained in chapter n° of Methodological section.

Built-up area		km ²	%
TOTAL		3359.49	100
Residential, tourist and commercial zone	Residential, tourist and commercial zone	3149.46	93.75
Industrial zone, logistics and transport	Industrial Zone	163.12	4.86
	Harbour + Airport	46.90	1.40
	Total	210.02	6.25

Coastline urbanization (Km)		Maritime coastline	Continental coastline	Total
Built-up coastline	With beach	139.13	7.50	146.63
	Without beach	162.54	152.71	315.25
	Total	301.67	160.21	461.88
Not built-up coastline	With beach	10.37	2.14	12.51
	Without beach	29.69	3.60	33.29
	Total	40.06	5.74	45.80
Total coastline with beach (km)		149.49	9.63	159.12
Total coastline without beach (km)		192.23	156.30	348.53
TOTAL COASTLINE (km)		341.73	165.94	507.67

Land occupation to 500m of the coast		km ²
Total land occupation to 500m of the coast		171.99
Land occupation by residential, tourist and commercial zone		121.46
Land occupation by Industrial zone, logistics and transport		4.70
Total of the built-up zone to 500m of the coast		126.15
Not built-up land		45.84

Spatial indices:

Land occupation indices	%
Built-up beach index	40.71
Built-up coast index	88.28
Built-up coastal zone index	73.35
Industrial, logistics and transport coastal zone index	2.73

Compactness index	0.34
-------------------	------

Tourism indices:

Tourist function indices	%
Lodging function rate <i>[2010]</i>	4.42
Second homes function rate <i>[2010]</i>	23.07
Tourist function rate <i>[2010]</i>	27.49

Concentration indices	
Tourism primacy index	35.16
Main tourist city regional weight index	4.70
Tourist area regional weight index	13.36

Urban attractiveness index	0.35
----------------------------	------

Tourism spatial indices:

Hotel density index	43.97
Lodging density index	485.78
Second home density index	407.61
Tourism density index	893.37

Beach hotel productivity index	995.30
Beach lodging productivity index	1,768.91
Beach second home productivity index	9,227.35
Beach tourism productivity index	10,996.27

Tourism spatial concentration index	1.15
-------------------------------------	------