
Marbella / Costa del Sol Occidental

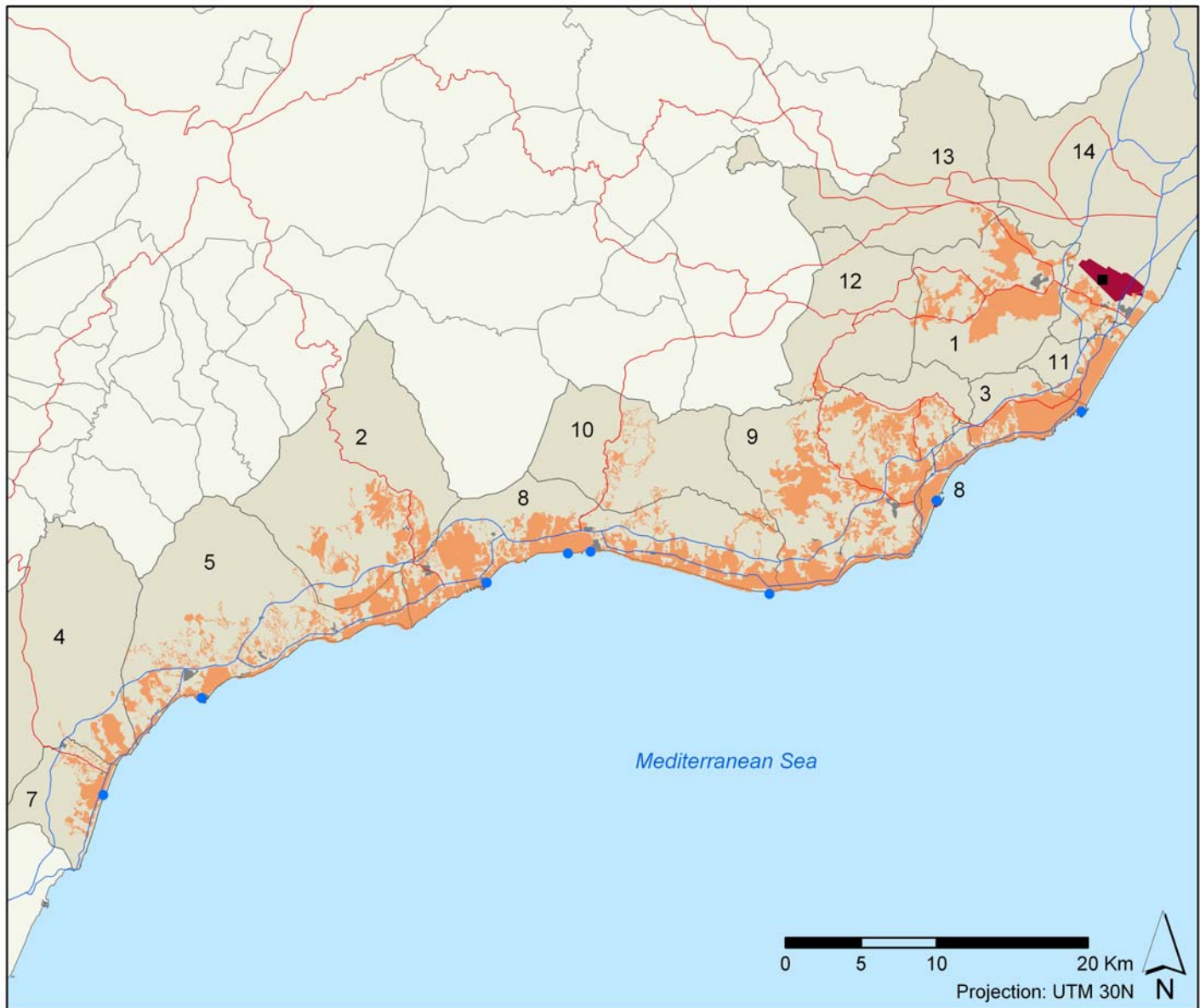


36°20'30" N 4°58'18" W



Image date: 2011

URABN AREA



Legend:

- Residential area
- Industrial area
- Transport area
- Motorway
- Main road
- Harbour
- Marina
- Harbour and marina
- Main airport
- Secondary airport

Administrative Levels		Population (2010)	Capacity of potential second homes (2001) (nº of bed spaces)	Lodging capacity (2009) (nº of bed spaces)
Main tourist city (<i>municipio</i>)	Torremolinos	66,957	60,165	28,040
Marbella-Costa del Sol Occidental Tourist Area		542,020	526,854	113,202
Subregion (<i>provincia</i>)	Málaga	3,219,114	994,599	150,667
Region (<i>comunidad autónoma</i>)	Andalucía	8,370,975	3,898,808	443,245

Nº	Municipios	Surface (Km ²)	Population (2010)	Housing units (2001)		Lodging capacity (2009) (nº of bed spaces/places)			
				Main homes	Capacity of potential second homes (nº of bed spaces)	Hotels	Camp sites	Others	Total
1	Alhaurín de la Torre	83.00	35,832	6,940	7,112	82	75	605	762
2	Benahavís	145.80	4,932	599	8,876	851	0	1,144	1,995
3	Benalmádena	26.60	61,383	12,567	68,919	9,814	0	8,116	17,930
4	Casares	162.00	5,182	1,210	4,708	200	0	1,062	1,262
5	Estepona	136.80	66,150	14,567	74,781	6,224	309	4,203	10,736
6	Fuengirola	10.20	71,783	17,498	71,442	6,853	879	6,367	14,099
7	Manilva	35.30	14,168	2,197	18,519	270	0	1,795	2,065
8	Marbella	114.30	136,322	35,252	157,220	12,199	4,201	9,130	25,530
9	Mijas	147.00	76,362	17,334	54,044	2,098	765	7,601	10,464
10	Ojén	85.40	2,949	742	1,068	190	0	129	319
11	Torremolinos	20.00	66,957	17,032	60,165	17,473	502	10,065	28,040

¹ Municipalities 12 (Alhaurín el Grande), 13 (Cártama) and 14 (Málaga) were not included in the statistical data table for methodological reasons explained in chapter nº of Methodological section

Built-up area		km ²	%
TOTAL		223.86	100
Residential, tourist and commercial zone	Residential, tourist and commercial zone	213.54	95.39
Industrial zone, logistics and transport	Industrial Zone	4.46	1.99
	Harbour + Airport	5.58	2.62
	Total	10.32	4.61

Coastline urbanization (Km)		Maritime coastline	Continental coastline	Total
Built-up coastline	With beach	79.65	-	79.65
	Without beach	18.49	-	18.49
	Total	98.14	-	98.14
Not built-up coastline	With beach	2.26	-	2.26
	Without beach	0.0	-	0.0
	Total	2.26	-	2.26
Total coastline with beach (km)		81.91	-	81.91
Total coastline without beach (km)		18.49	-	18.49
TOTAL COASTLINE (km)		100.40	-	100.40

Land occupation to 500m of the coast	km ²
Total land occupation to 500m of the coast	46.68
Land occupation by residential, tourist and commercial zone	33.08
Land occupation by Industrial zone, logistics and transport	0.85
Total of the built-up zone to 500m of the coast	33.93
Not built-up land	12.75

Spatial indices:

Land occupation indices	%
Built-up beach index	79.33
Built-up coast index	97.75
Built-up coastal zone index	72.69
Industrial, logistics and transport coastal zone index	1.81

Compactness index	0.10
-------------------	------

Tourism indices:

Tourist function indices	%
Lodging function rate <i>[2009]</i>	21.32
Second homes function rate <i>[2001]</i>	38.91
Tourist function rate <i>[2001]</i>	158.85

Concentration indices	
Tourism primacy index	29.83
Main tourist city regional weight index	22.55
Tourist area regional weight index	99.98

Urban attractiveness index	2.13
----------------------------	------

Tourism spatial indices:

Hotel density index	263.43
Lodging density index	1,060.22
Second home density index	530.11
Tourism density index	1,590.33

Beach hotel productivity index	706.26
Beach lodging productivity index	1,421.24
Beach second home productivity index	1,421.24
Beach tourism productivity index	2,842.49

Tourism spatial concentration index	0.98
-------------------------------------	------