
Mar del Plata



37°59'53,95" S 57°34'00,94" W

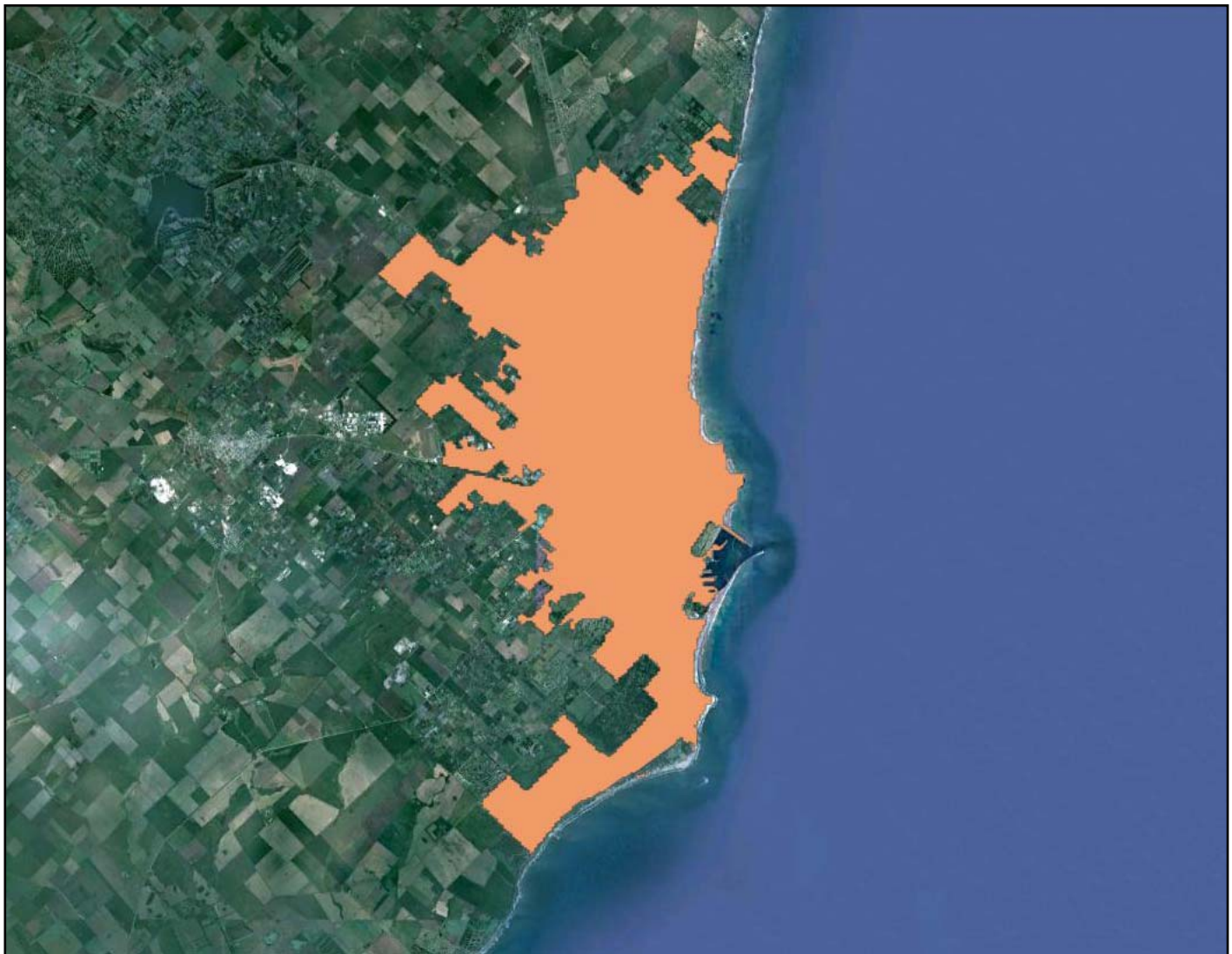
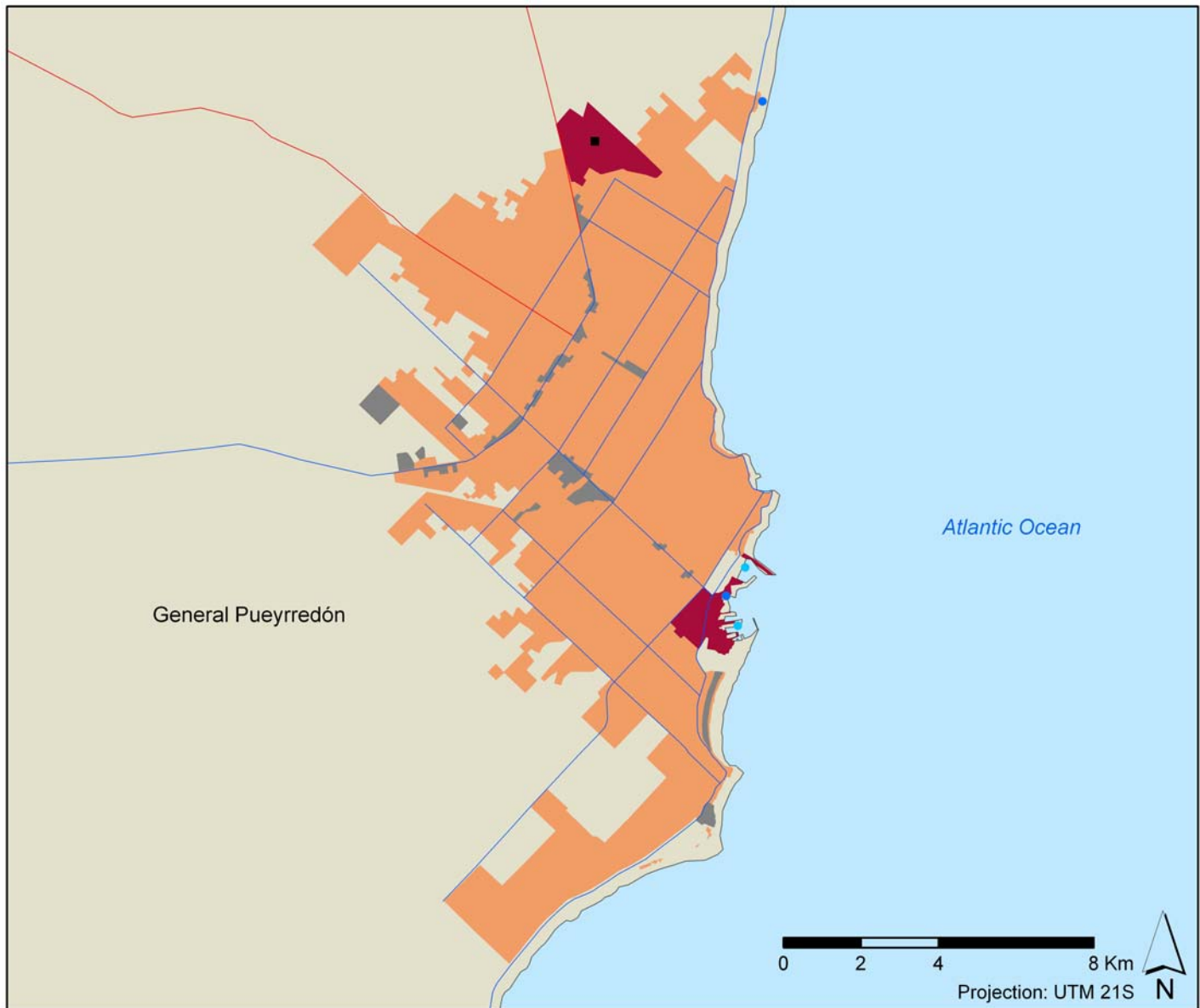


Image date: 2011

URBAN AREA



Legend:

- Residential area
- Industrial area
- Transport area
- Motorway
- Main road
- Harbour
- Marina
- Harbour and marina
- Main airport
- Secondary airport

Administrative Levels		Population (2010)	Capacity of potential second homes (2001) (nº of bed spaces)	Lodging capacity (2011) (nº of bed spaces)
Main tourist city (<i>aglomerado</i>)	Mar del Plata	595,797	245,889	57,191
Subregion (<i>partido</i>)	General Pueyrredón	614,350	252,529	NDA
Region (<i>provincia</i>)	Buenos Aires	15,594,428	1,206,132	174,392

Agglomerado	Surface (Km ²)	Population ¹ (2010)	Housing units (2001)		Lodging capacity (2011) (n° of bed spaces)			
			Main homes	Capacity of potential second homes (n° of bed spaces)	Hotels	Camp sites	Others	Total
Mar del Plata	1,460.00	597,797	184.429	245,889	33,855	NDA	23,336	57,191

¹ Estimated data.

Built-up area		km ²	%
TOTAL		115.60	100
Residential, tourist and commercial zone	Residential, tourist and commercial zone	107.09	92.64
Industrial zone, logistics and transport	Industrial Zone	3.78	3.27
	Harbour + Airport	4.73	4.10
	Total	8.51	7.37

Coastline urbanization (Km)		Maritime coastline	Continental coastline	Total
Built-up coastline	With beach	17.42	-	17.42
	Without beach	6.11	-	6.11
	Total	23.53	-	23.53
Not built-up coastline	With beach	2.03	-	2.03
	Without beach	5.84	-	5.84
	Total	7.87	-	7.87
Total coastline with beach (km)		19.45	-	19.45
Total coastline without beach (km)		11.94	-	11.94
TOTAL COASTLINE (km)		31.40	-	31.40

Land occupation to 500m of the coast		km ²
Total land occupation to 500m of the coast		13.27
Land occupation by residential, tourist and commercial zone		4.31
Land occupation by Industrial zone, logistics and transport		0.92
Total of the built-up zone to 500m of the coast		5.24
Not built-up land		8.96

Spatial indices:

Land occupation indices	%
Built-up beach index	55.49
Built-up coast index	74.94
Built-up coastal zone index	39.46
Industrial, logistics and transport coastal zone index	6.95

Compactness index	0.38
-------------------	------

Tourism indices:

Tourist function indices	%
Lodging function rate <i>[2011]</i>	9.60
Second homes function rate <i>[2001]</i>	45.39
Tourist function rate <i>[2001]</i>	55.47

Concentration indices	
Tourism primacy index	**
Main tourist city regional weight index	32.79
Tourist area regional weight index	32.79

** The calculation was not performed in destinations that include less than three municipalities within their limits

Urban attractiveness index	9.44
----------------------------	------

Tourism spatial indices:

Hotel density index	316.14
Lodging density index	2,830.15
Second home density index	2,296.10
Tourism density index	2,514.01

Beach hotel productivity index	1,943.45
Beach lodging productivity index	3,283.05
Beach second home productivity index	14,115.28
Beach tourism productivity index	17,398.33

Tourism spatial concentration index	*
-------------------------------------	---

* This index has not been calculated for the destinations that have a single municipality