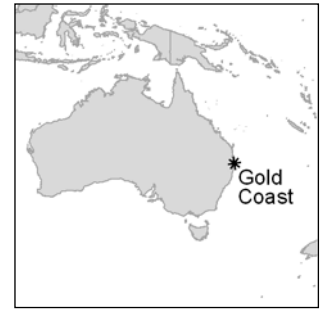

Gold Coast



28°02'44,95" S 153°25'18,05" E

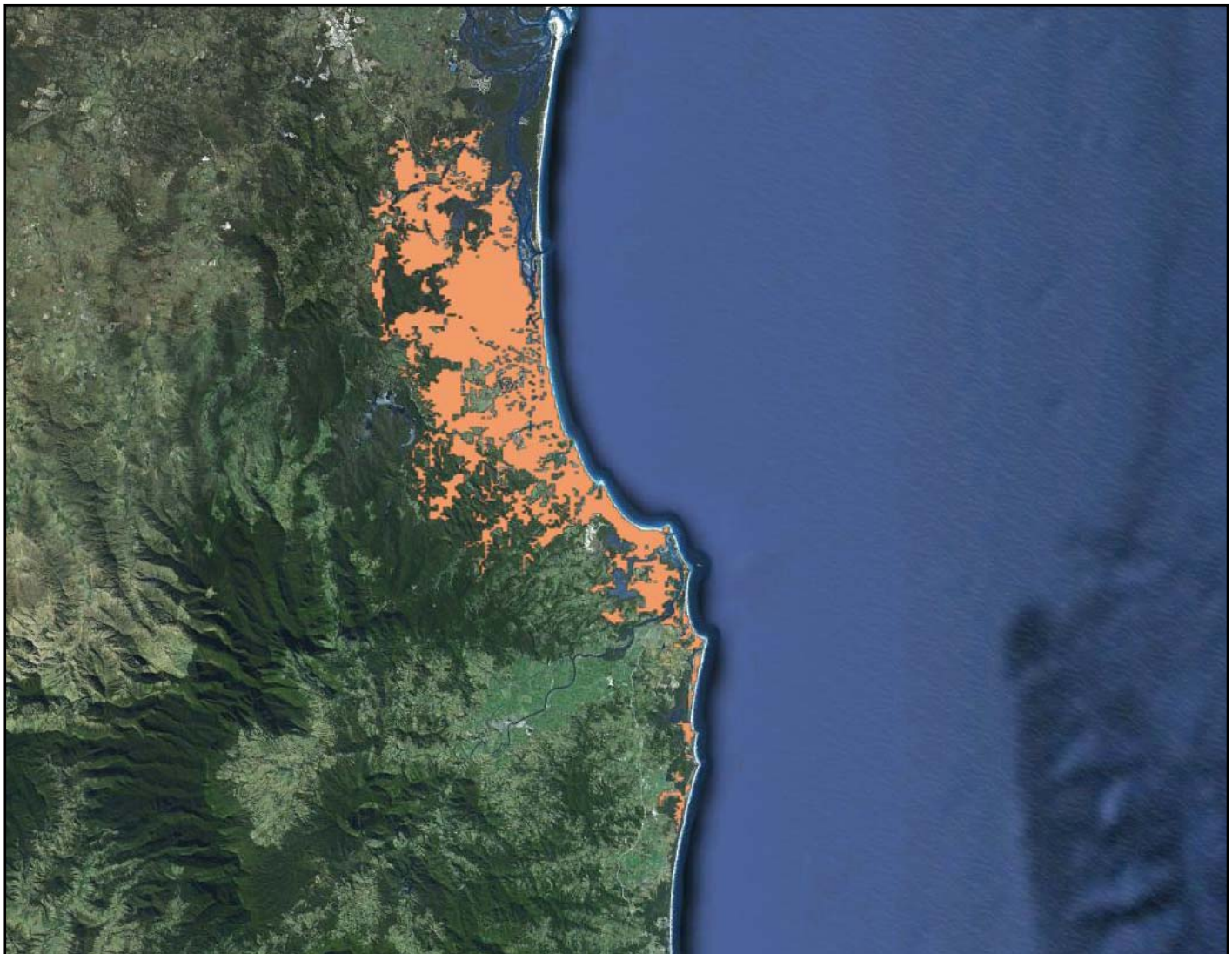
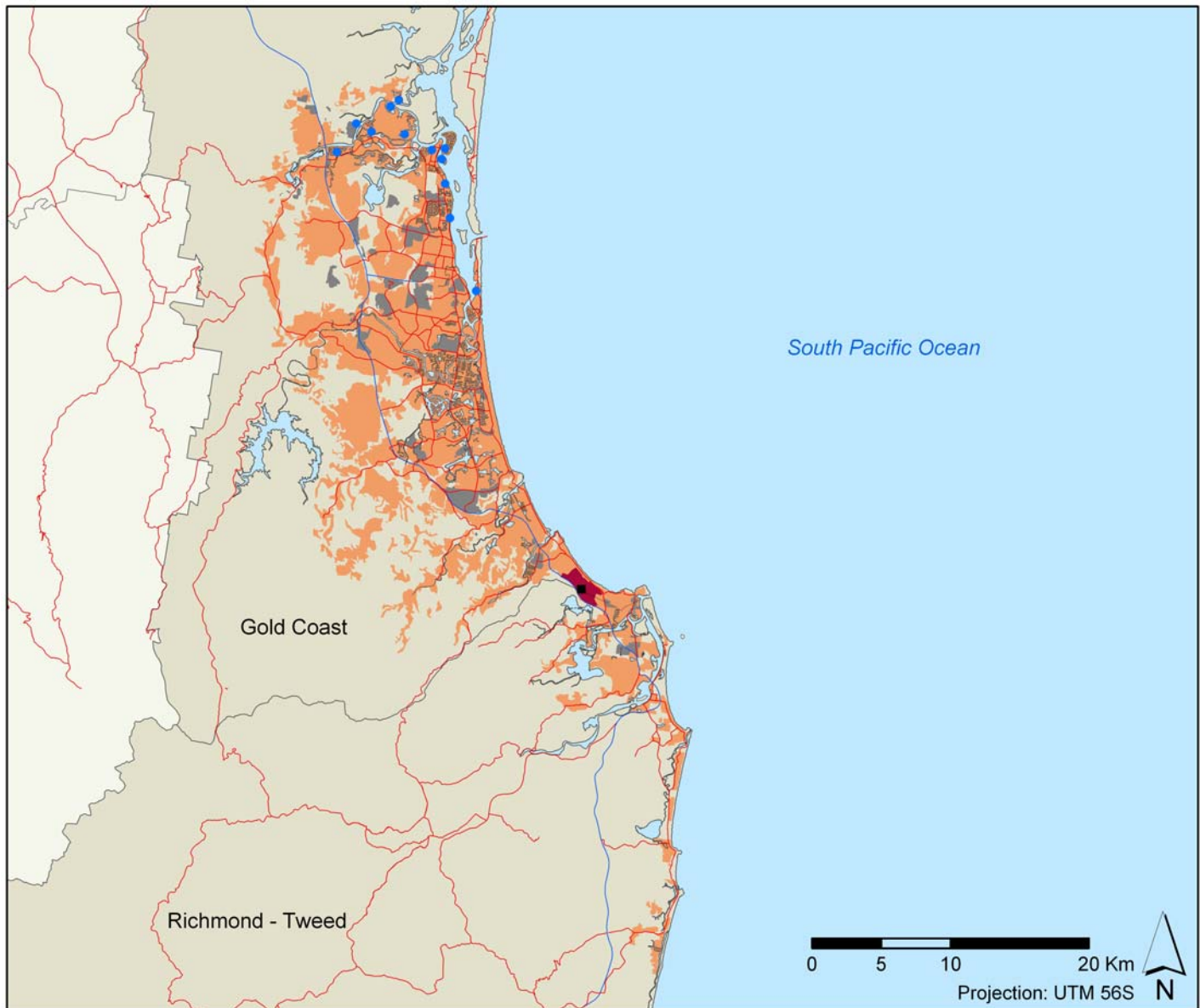


Image date: 2011

URBAN AREA



Legend:

Residential area	Motorway	Harbour	Main airport
Industrial area	Main road	Marina	Secondary airport
Transport area		Harbour and marina	

Administrative Levels		Population (2010)	Capacity of potential second homes (2006) (n° of bed spaces)	Lodging capacity (2010) (n° of bed spaces)
Main tourist city (SD/TR)	Gold Coast	527,828	88,837	68,773
Gold Coast Tourist Area		771,913	118,885	93,932
Regions (states)	Queensland	4,513,850	375,505	296,013
	New South Wales	7,232,589	476,210	334,282
Total Regions		11,746,439	851,715	630,295

SD/ TR	Surface (Km ²)	Population (2010)	Housing units (2006)		Lodging capacity (2010) (n° of bed spaces)			
			Main homes	Capacity of potential second homes (n° of bed spaces)	Hotels	Camp Sites	Others	Total
Gold Coast	1,333.80	527,828	200,432	88,837	24,395	3,226	41,152	68,773
Richmont Tweed	1,0291.20	244,085	89,997	30,048	8,950	7,148	9,061	25,159

¹ Administrative Level for of Population and Housing Units data corresponds to Statistical Divisions (SD) and for Lodging Capacity data corresponds to Tourism Regions (Gold Coast & Northern Rivers Tropical).

Built-up area		km ²	%
TOTAL		343.74	100
Residential, tourist and commercial zone	Residential, tourist and commercial zone	311.78	90.70
Industrial zone, logistics and transport	Industrial Zone	27.47	8.00
	Harbour + Airport	4.48	1.30
	Total	31.96	9.30

Coastline urbanization (Km)		Maritime coastline	Continental coastline	Total
Built-up coastline	With beach	50.46	20.37	70.83
	Without beach	4.56	26.62	31.18
	Total	55.02	46.99	102.19
Not built-up coastline	With beach	22.41	22.09	44.50
	Without beach	3.02	3.68	6.70
	Total	25.43	25.76	51.19
Total coastline with beach (km)		72.87	42.46	115.33
Total coastline without beach (km)		7.58	30.29	37.87
TOTAL COASTLINE (km)		80.45	72.75	153.20

Land occupation to 500m of the coast		km ²
Total land occupation to 500m of the coast		44.17
Land occupation by residential, tourist and commercial zone		18.86
Land occupation by Industrial zone, logistics and transport		0.90
Total of the built-up zone to 500m of the coast		19.76
Not built-up land		24.42

Spatial indices:

Land occupation indices	%
Built-up beach index	62.72
Built-up coast index	68.39
Built-up coastal zone index	44.74
Industrial, logistics and transport coastal zone index	2.04

Compactness index	0.17
-------------------	------

Tourism indices:

Tourist function indices	%
Lodging function rate <i>[2010]</i>	12.17
Second homes function rate <i>[2006]</i>	16.94
Tourist function rate <i>[2006]</i>	31.01

Concentration indices	
Tourism primacy index	**
Main tourist city regional weight index	7.91
Tourist area regional weight index	10.80

** The calculation was not performed in destinations that include less than three municipalities within their limits

Urban attractiveness index	1.80
----------------------------	------

Tourism spatial indices:

Hotel density index	106.95
Lodging density index	682.59
Second home density index	381.31
Tourism density index	542.36

Beach hotel productivity index	660.82
Beach lodging productivity index	1,861.51
Beach second home productivity index	2,356.02
Beach tourism productivity index	4,217.54

Tourism spatial concentration index	0.81
-------------------------------------	------