
Florianópolis

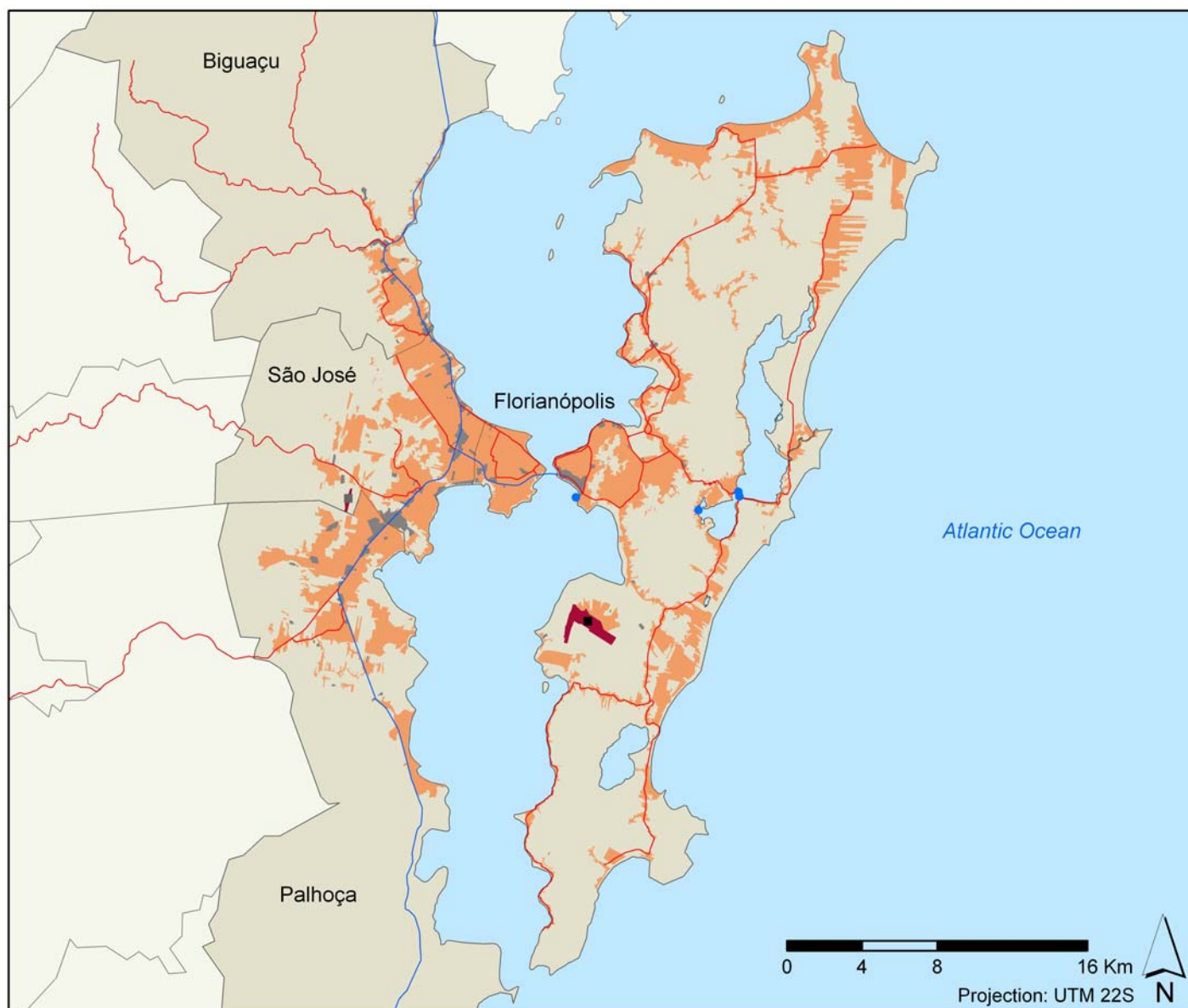


27°35'40,15" S 48°35'06,25" W



Image date: 2011

URBAN AREA



Legend:

Residential area	Motorway	Harbour	Main airport
Industrial area	Main road	Marina	Secondary airport
Transport area		Harbour and marina	

Administrative Levels		Population (2010)	Capacity of potential second homes (2010) (nº of bed spaces)	Lodging capacity (2011) (nº of bed spaces)
Main tourist city (<i>município</i>)	Florianópolis	421,203	103,523	28,633
Florianópolis Tourist Area		631,716	114,181	30,276
Subregion (<i>estado</i>)	Santa Catarina	6,249,682	860,542	152,859

Municípios	Surface (Km ²)	Population (2010)	Housing units (2010)		Lodging capacity (2011) (nº of bed spaces)			
			Main homes	Capacity of potential second homes (nº of bed spaces)	Hotels	Camp sites	Others	Total
Florianópolis	436.5	421,203	164,626	103,523	22,900	NDA	5,733	28,633
São José	113.6	210,513	75,583	10,658	1,643	NDA	NDA	1,643

¹ Municipalities "Biguaçu" and "Palhoça" were not included in the statistical data table for methodological reasons explained in chapter nº of Methodological section.

Built-up area		km ²	%
TOTAL		181.35	100
Residential, tourist and commercial zone	Residential, tourist and commercial zone	169.88	93.68
Industrial zone, logistics and transport	Industrial Zone	9.00	4.96
	Harbour + Airport	2.46	1.36
	Total	11.46	6.32

Coastline urbanization (Km)		Maritime coastline	Continental coastline	Total
Built-up coastline	With beach	108.54	-	108.54
	Without beach	48.20	41.90	90.10
	Total	156.74	41.90	198.64
Not built-up coastline	With beach	23.52	-	23.52
	Without beach	49.01	27.78	76.79
	Total	72.53	27.78	100.31
Total coastline with beach (km)		132.06	-	132.06
Total coastline without beach (km)		97.21	69.68	166.89
TOTAL COASTLINE (km)		229.27	69.68	298.95

Land occupation to 500m of the coast		km ²
Total land occupation to 500m of the coast		127.80
Land occupation by residential, tourist and commercial zone		40.56
Land occupation by Industrial zone, logistics and transport		2.36
Total of the built-up zone to 500m of the coast		42.92
Not built-up land		84.87

Spatial indices:

Land occupation indices	%
Built-up beach index	47.34
Built-up coast index	68.36
Built-up coastal zone index	33.59
Industrial, logistics and transport coastal zone index	1.85

Compactness index	0.16
-------------------	------

Tourism indices:

Tourist function indices	%
Lodging function rate <i>[2011]</i>	4.79
Second homes function rate <i>[2010]</i>	18.07
Tourist function rate <i>[2010]</i>	22.87

Concentration indices	
Tourism primacy index	**
Main tourist city regional weight index	18.73
Tourist area regional weight index	19.81

** The calculation was not performed in destinations that include less than three municipalities within their limits

Urban attractiveness index	2.78
----------------------------	------

Tourism spatial indices:

Hotel density index	144.47
Lodging density index	850.32
Second home density index	672.11
Tourism density index	705.86

Beach hotel productivity index	226.12
Beach lodging productivity index	278.94
Beach second home productivity index	1,051.97
Beach tourism productivity index	1,330.91

Tourism spatial concentration index	1.72
-------------------------------------	------