
Calvià - Palma



39°34'41,75" N 2°38'33,79" E

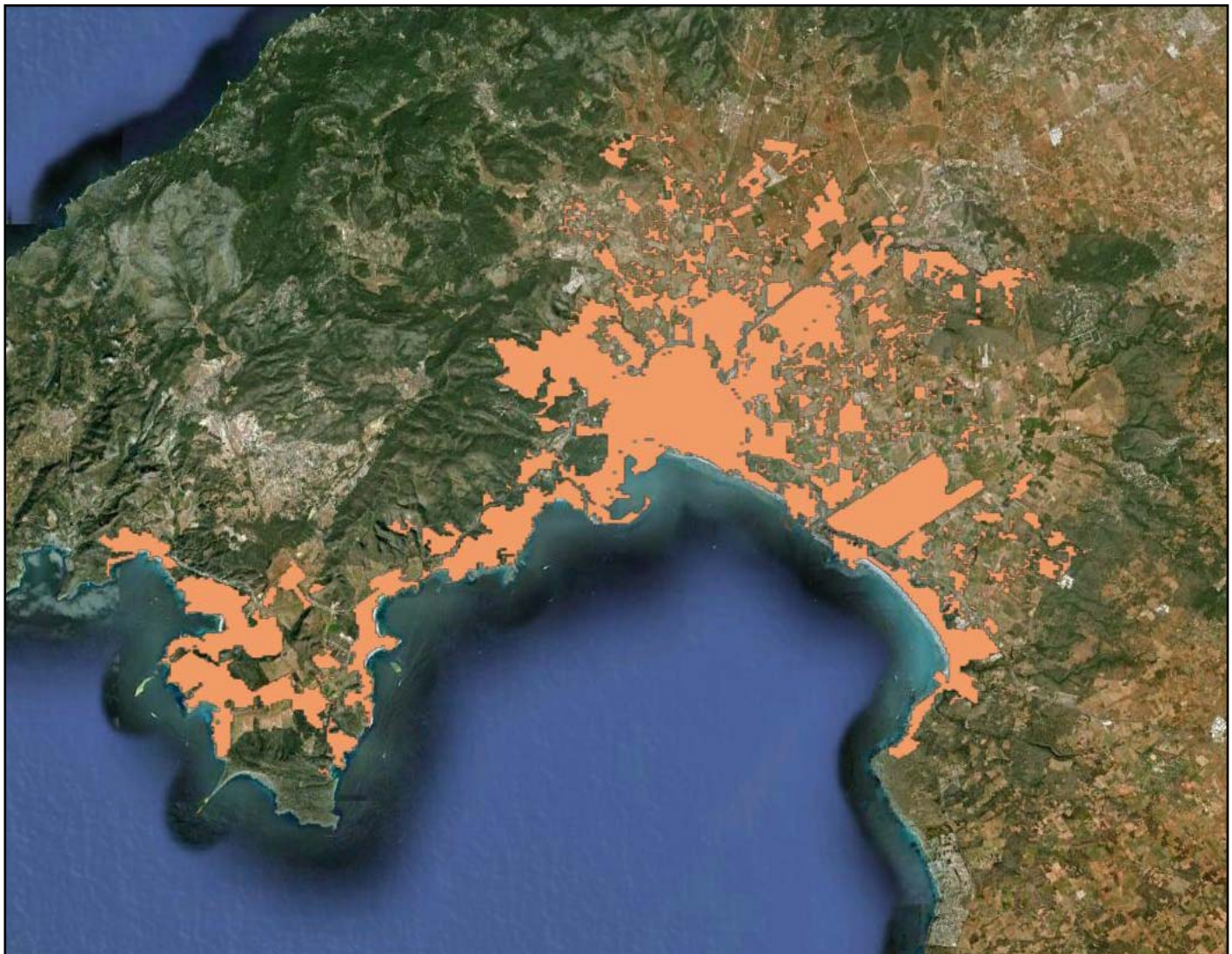
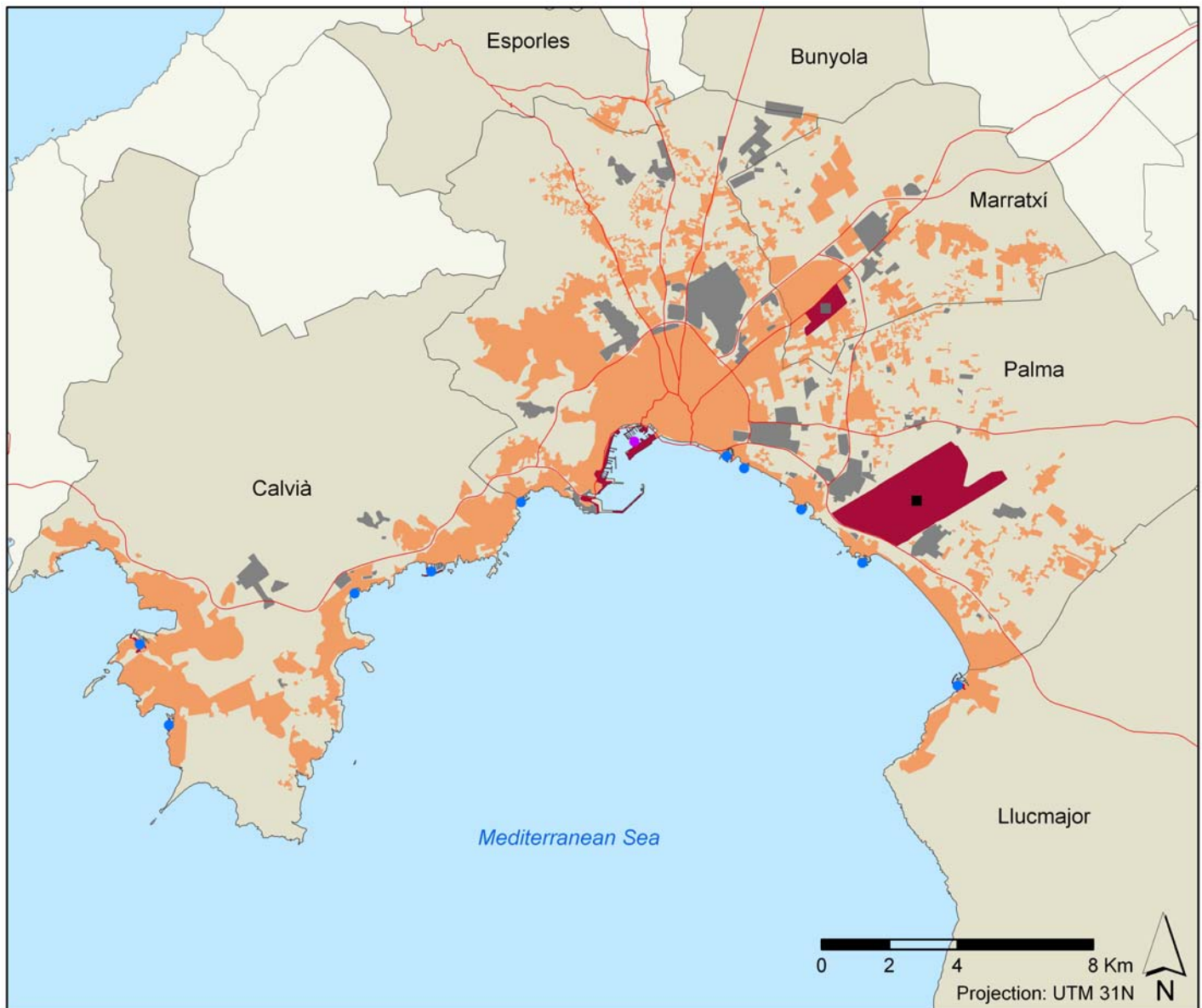


Image date: 2011

URBAN AREA



Legend:

- Residential area
- Industrial area
- Transport area
- Motorway
- Main road
- Harbour
- Marina
- Harbour and marina
- Main airport
- Secondary airport

Administrative Levels		Population (2010)	Capacity of potential second homes (2001) (nº of bed spaces)	Lodging capacity (2009) (nº of bed spaces)
Main tourist city (<i>municipi</i>)	Calvià	51,462	73,910	59,273
Calvià-Palma Tourist Area		490,026	211,292	102,491
Subregion (<i>illa</i>)	Mallorca	860,995	518,389	285,065
Region (<i>comunitat autònoma</i>)	Illes Balears	1,106,049	687,267	422,918

Municipis	Surface (Km ²)	Population (2010)	Housing units (2001)		Lodging capacity (2009) (nº of bed spaces/places)			
			Main homes	Capacity of potential second homes (nº of bed spaces)	Hotels	Camp Sites	Others	Total
Calvià	145.00	51,462	13,959	73,910	33,686	0	25,587	59,273
Marratxí	54.00	33,883	7,527	5,950	0	0	16	16
Palma	208.63	404,681	119,894	131,432	33,992	0	9,210	43,202

¹ Bunyola, Esporles and LLucmajor municipalities were not included in the statistical data table for methodological reasons explained in chapter nº of Methodological section.

Built-up area		km ²	%
TOTAL		101.81	100
Residential, tourist and commercial zone	Residential, tourist and commercial zone	78.74	77.34
Industrial zone, logistics and transport	Industrial Zone	14.45	14.20
	Harbour + Airport	8.62	8.47
	Total	23.07	22.66

Coastline urbanization (Km)		Maritime coastline	Continental coastline	Total
Built-up coastline	With beach	11.63	-	11.63
	Without beach	59.48	-	59.48
	Total	71.11	-	71.11
Not built-up coastline	With beach	0.08	-	0.08
	Without beach	16.37	-	16.37
	Total	16.45	-	16.45
Total coastline with beach (km)		11.71	-	11.71
Total coastline without beach (km)		75.85	-	75.85
TOTAL COASTLINE (km)		87.56	-	87.56

Land occupation to 500m of the coast		km ²
Total land occupation to 500m of the coast		28.79
Land occupation by residential, tourist and commercial zone		17.16
Land occupation by Industrial zone, logistics and transport		1.65
Total of the built-up zone to 500m of the coast		18.71
Not built-up land		10.08