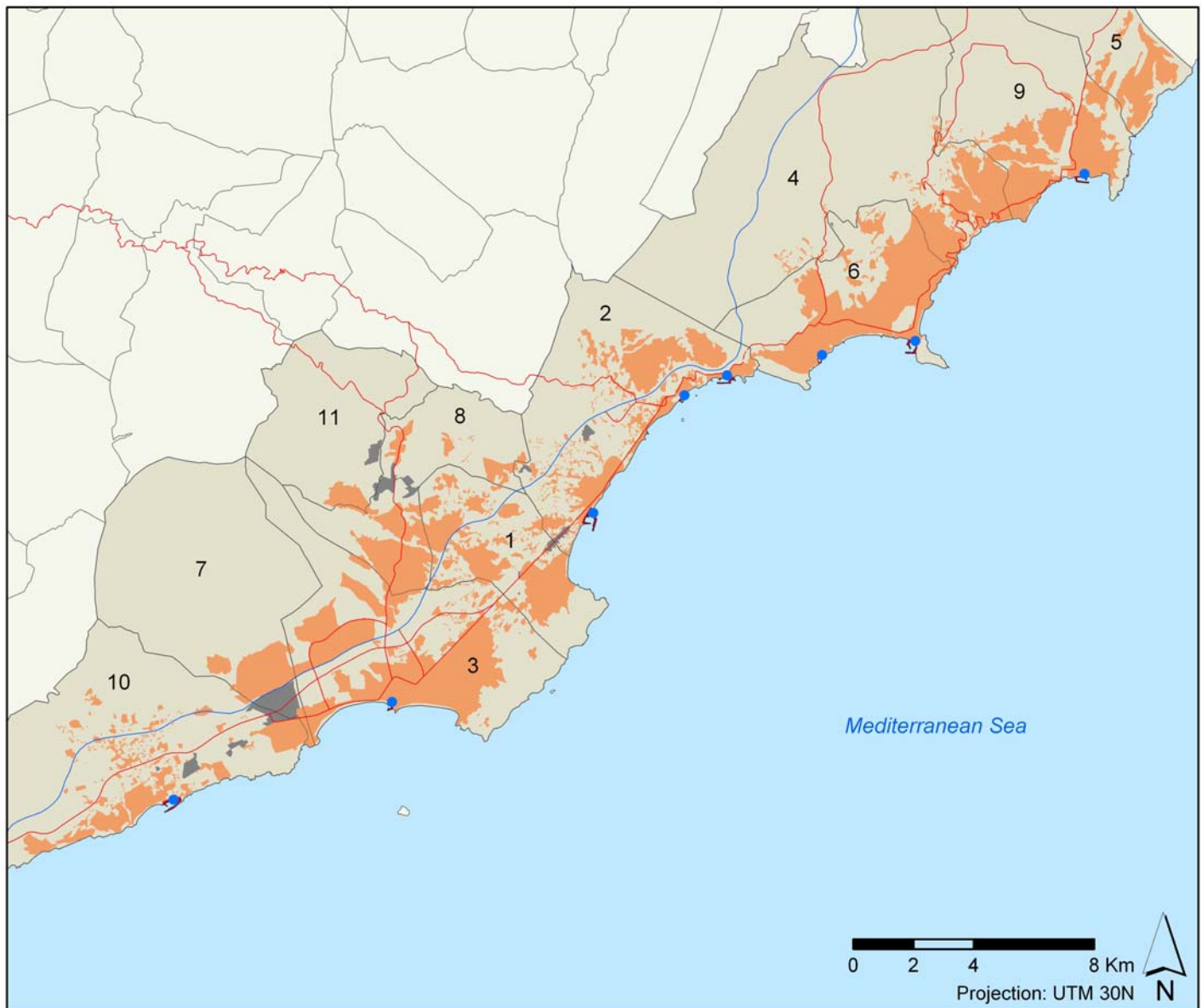

Benidorm / Costa Blanca



38°37'53,74" N 0°01'20,97" W



Image date: 2011



Legend:

 Residential area	 Motorway	 Harbour	 Main airport
 Industrial area	 Main road	 Marina	 Secondary airport
 Transport area		 Harbour and marina	

Administrative Levels		Population (2010)	Capacity of potential second homes (2001) (nº of bed spaces)	Lodging capacity (2010) (nº of bed spaces)
Main tourist city (<i>municipi</i>)	Benidorm	71,198	114,797	69,834
Benidorm Tourist Area		239,035	288,922	111,346
Subregion (<i>provincia</i>)	Alacant	1,926,285	1,690,217	183,033
Regió (<i>comunitat autònoma</i>)	Comunitat Valenciana	5,111,706	3,692,441	358,766

Nº	Municipis	Surface (Km ²)	Population (2010)	Housing units (2001)		Lodging capacity (2010) (nº of bed spaces/places)			
				Main homes	Capacity of potential second homes (nº of bed spaces)	Hotels	Camp sites	Others	Total
1	L'Alfàs del Pi	19.26	21,332	4,626	22,369	2,001	0	3,793	5,794
2	Altea	34.43	24,006	5,842	22,943	1,273	897	2,431	4,601
3	Benidorm	38.51	71,198	19,941	114,797	39,941	11,275	18,618	69,834
4	Benissa	69.71	13,369	3,686	18,907	80	0	3,476	3,556
5	Benitachell	12.65	5,488	983	4,774	0	0	1,160	1,160
6	Calp	23.51	29,909	7,586	37,797	3,345	546	12,507	16,398
7	Finestrat	42.25	6,386	1,001	8,264	535	0	2,147	2,682
8	la Nucia	21.36	18,225	2,697	11,890	0	0	604	604
9	Teulada	32.24	14,778	3,724	26,247	314	274	3,339	3,927
10	Villajoyosa	38.5	34,344	8,241	20,934	624	255	1,911	2,790

¹ Municipality 11 (Polop) was not included in the statistical data table for methodological reasons explained in chapter nº of Methodological section.

Built-up area		km ²	%
TOTAL		83.19	100
Residential, tourist and commercial zone	Residential, tourist and commercial zone	79.69	95.80
Industrial zone, logistics and transport	Industrial Zone	3.14	3.78
	Harbour + Airport	0.35	0.42
	Total	3.50	4.20

Coastline urbanization (Km)		Maritime coastline	Continental coastline	Total
Built-up coastline	With beach	23.13	-	23.13
	Without beach	35.93	-	35.93
	Total	59.06	-	59.06
Not built-up coastline	With beach	0.81	-	0.81
	Without beach	19.91	-	19.91
	Total	20.72	-	20.72
Total coastline with beach (km)		23.94	-	23.94
Total coastline without beach (km)		55.84	-	55.84
TOTAL COASTLINE (km)		79.78	-	79.78

Land occupation to 500m of the coast	km ²
Total land occupation to 500m of the coast	28.18
Land occupation by residential, tourist and commercial zone	16.34
Land occupation by Industrial zone, logistics and transport	0.45
Total of the built-up zone to 500m of the coast	16.79
Not built-up land	11.39

Spatial indices:

Land occupation indices	%
Built-up beach index	22.99
Built-up coast index	74.03
Built-up coastal zone index	59.59
Industrial, logistics and transport coastal zone index	1.59

Compactness index	0.08
-------------------	------

Tourism indices:

Tourist function indices	%
Lodging function rate <i>[2010]</i>	46.58
Second homes function rate <i>[2001]</i>	191.37
Tourist function rate <i>[2001]</i>	251.83

Concentration indices	
Tourism primacy index	65.51
Main tourist city regional weight index	31.99
Tourist area regional weight index	52.49

Urban attractiveness index	8.66
----------------------------	------

Tourism spatial indices:

Hotel density index	603.72
Lodging density index	5,022.55
Second home density index	3,625.38
Tourism density index	8,647.93

Beach hotel productivity index	2,080.20
Beach lodging productivity index	4,814.11
Beach second home productivity index	12,491.72
Beach tourism productivity index	17,305.83

Tourism spatial concentration index	3.17
-------------------------------------	------